



Four Bedroom Terraced House

Hawker Road, Ash Vale, Surrey, GU12 5SL

Price: £475,000

- Four Bedroom Semi-Detached Townhouse
- Three Bathrooms
- Garage
- Driveway Parking
- Complete Chain above
- Kitchen/Diner
- Private Enclosed Garden
- EPC: C (70)



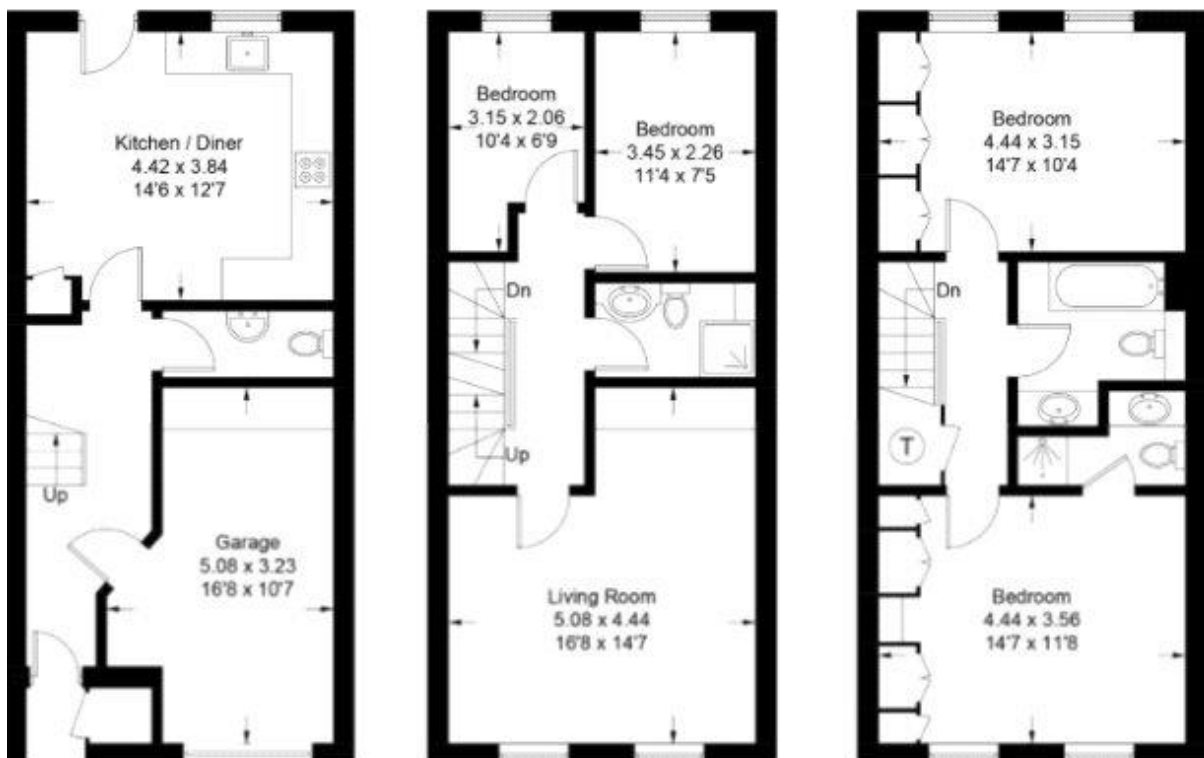
Description

Located in the popular Old Farm Place development is this well presented and spacious four bedroom townhouse. The property boasts a generous size kitchen/diner with direct access into the garden, a cloakroom and access into the integral garage. The first floor boasts a spacious living room, three bedrooms and a shower room, whilst the top floor benefits from a further two double bedrooms with built in wardrobes, an en suite shower room and a family bathroom suite.

Outside

Outside boasts a west facing low maintenance garden, an integral garage and driveway parking.

Floorplan



TO ARRANGE A VIEWING PLEASE CONTACT:
Tel: 01252 361550 or Email: info@bridges.co.uk



Important Notice - These particulars are set out as a general outline only for the guidance of intended purchasers/tenants and do not form part of any offer or contract and must not be relied upon as statements or representations of fact. Purchasers/Tenants must satisfy themselves by inspection or otherwise as to their correctness.