



Two Bedroom Apartment

London Road, Camberley, GU15 3JJ

Guide Price: £280,000

- Two Double Bedrooms
- First Floor Apartment
- Refitted Bathrooms
- Communal Gardens
- Allocated Underground Parking
- Town Centre Location
- Close to Amenities
- EPC: C (76)



Description

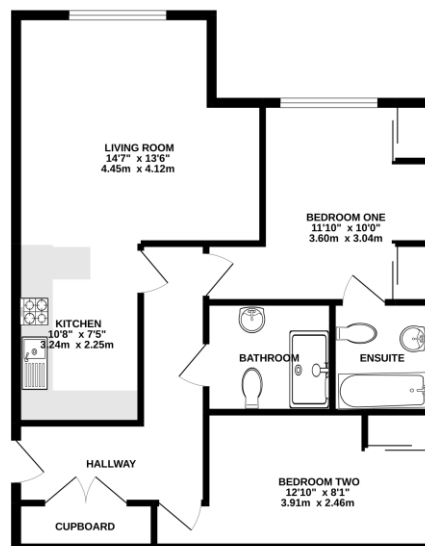
This is an excellent opportunity to purchase a spacious two bedroom second floor executive apartment located in the sought after Dorchester Court development in Camberley. The property has been much improved by the current owners and is offered to the market with no onward chain. The property features a spacious entrance hallway with a substantial laundry/airing cupboard, two double bedrooms with built-in wardrobes, a refitted en suite to the main bedroom, a refitted modern family bathroom, and a spacious living room with a modern kitchen. The open plan kitchen/living/dining room benefits from a built-in TV display unit which also includes a breakfast bar and fully integrated appliances. The apartment benefits from telephone entry, secure underground parking and communal gardens.

Outside

Located within walking distance of Camberley town centre where you can find a host of convenient amenities including Camberley train station, the SQ Shopping Mall, the Atrium where you will find an array of restaurants, cinema, bowling/entertainment complex, children's soft play and convenience stores. Also situated within easy reach of commutable links and access to the M3 for easy journeys to London and the south coast.

Floorplan

GROUND FLOOR



Whilst every effort has been made to ensure the accuracy of the floorplan contained here, measurements of doors, windows, rooms and any other items are approximate and no responsibility is taken for any error, omission or misstatement. This plan is for illustrative purposes only and should be used as a guide only. Prospective purchasers should satisfy themselves by inspection or otherwise as to their correctness. Made with Smartplan 12/2012



TO ARRANGE A VIEWING PLEASE CONTACT:

Tel: **01276 685544** or Email:
camberley@bridges.co.uk



Important Notice - These particulars are set out as a general outline only for the guidance of intended purchasers/tenants and do not form part of any offer or contract and must not be relied upon as statements or representations of fact. Purchasers/Tenants must satisfy themselves by inspection or otherwise as to their correctness.