

Two Bedroom Apartment

Lower Hale, Farnham, Surrey, GU9 9RP

Price: £600,000

- Two Spacious Double Bedrooms
- Stunning First Floor Apartment
- Secluded Sun Trap Balcony
- Open Plan Kitchen Diner
- Elegant Drawing Room with Fireplace
- Parking and Spacious Garage
- Fitted Wardrobes and Cupboards
- EPC: D (66)



Description

An outstanding two double bedroom, first floor apartment in a converted country house boasting gorgeous character features and beautiful communal grounds, ideal for downsizers. The accommodation comprises an entrance hall, grand drawing room with a high ceiling, fireplace, bay window, a kitchen/diner with island, the study area offers amazing views. There are two double bedrooms, the principal bedroom featuring a vaulted ceiling and a cast iron chandelier, used currently as a craft/guest bedroom. Additionally, there is a refitted four piece bathroom, corridor with storage cupboards and a secluded suntrap balcony.

Outside

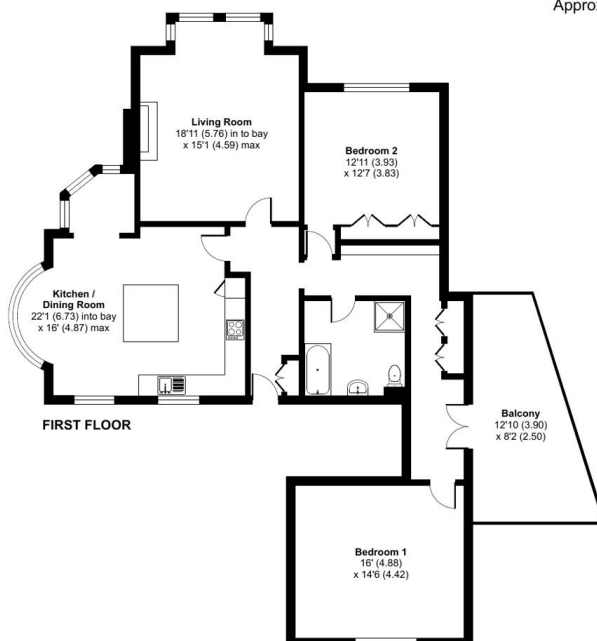
The flat has its own entrance with a wide staircase to the first floor. The building sits in manicured, secluded grounds with mature shrubs and impressive trees, of over two acres and benefits from a spacious garage, parking and a balcony.

Floorplan

Ravenswood House Lower Hale, Farnham, Surrey, GU9

Approximate Area = 1375 sq ft / 127.7 sq m

For identification only - Not to scale



Floor plan produced in accordance with RICS Property Measurement Standards incorporating International Property Measurement Standards (IPMS2 Residential). © nrichcom 2025. Produced for Bridges Estate Agents. REF: 1248373



TO ARRANGE A VIEWING PLEASE CONTACT:
Tel: **01252 361550** or Email: **info@bridges.co.uk**



Important Notice - These particulars are set out as a general outline only for the guidance of intended purchasers/tenants and do not form part of any offer or contract and must not be relied upon as statements or representations of fact. Purchasers/Tenants must satisfy themselves by inspection or otherwise as to their correctness.