

Two Bedroom Semi-Detached House

Oaktrees, Ash, Surrey, GU12 6QS

Price: £350,000

- Two Bedrooms
- Semi-Detached
- Driveway
- Cul-de-Sac
- Overlooking Playing Fields
- Conservatory
- South East Facing Garden
- EPC: D (67)



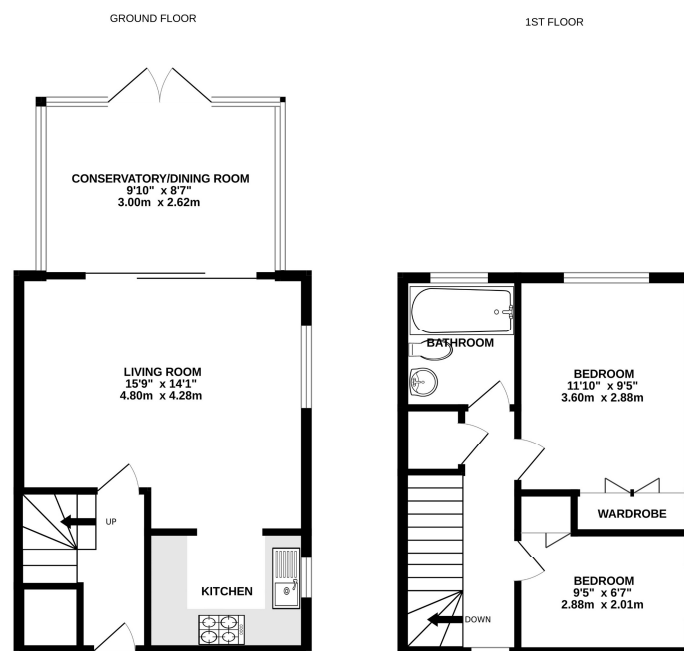
Description

This fantastic two bedroom semi-detached home is situated in a brilliant location, overlooking school playing fields on a popular cul-de-sac in Ash. The house is presented in great order throughout and features a spacious living room, fitted kitchen and bathroom suite - as well as a conservatory and two bedrooms. You will also find a south east facing, low maintenance enclosed garden and driveway for two vehicles. It is conveniently located within walking distance of local schools, amenities and shops and a within a short drive of the A331. This property is a must see! Please call us today to book your viewing!

Outside

Externally, this property offers driveway parking for two vehicles and a private garden, with a lovely view over playing fields.

Floorplan



Whilst every attempt has been made to ensure the accuracy of the floorplan contained here, measurements of doors, windows, rooms and any other items are approximate and no responsibility is taken for any error, omission or mis-statement. This plan is for illustrative purposes only and should be used as such by any prospective purchaser. The services, systems and appliances shown have not been tested and no guarantee as to their operability or efficiency can be given.
Made with Metaplan 10/2020



TO ARRANGE A VIEWING PLEASE CONTACT:
Tel: **01252 361550** or Email: **info@bridges.co.uk**



Important Notice - These particulars are set out as a general outline only for the guidance of intended purchasers/tenants and do not form part of any offer or contract and must not be relied upon as statements or representations of fact. Purchasers/Tenants must satisfy themselves by inspection or otherwise as to their correctness.