



## Four Bedroom Maisonette

**Queens Road, Bisley, Woking, Surrey, GU24 9AU**

Offers in Excess of: £650,000

- Two Bedroom Maisonette
- Private South Facing Garden
- Self Contained Two Bedroom Annex
- Driveway Parking
- Wood Burner
- Conservatory
- Close to Brookwood Mainline Station
- EPC: D (64)





## Description

A rare opportunity to purchase an immaculate two bedroom ground floor maisonette and a separate self contained two bedroom annexe.

The maisonette boasts two spacious double bedrooms, a refitted modern bathroom, a fitted kitchen with plenty of storage and work top space and a spacious living room with a log burner and double doors which lead through to a conservatory that is currently being used as a dining room.

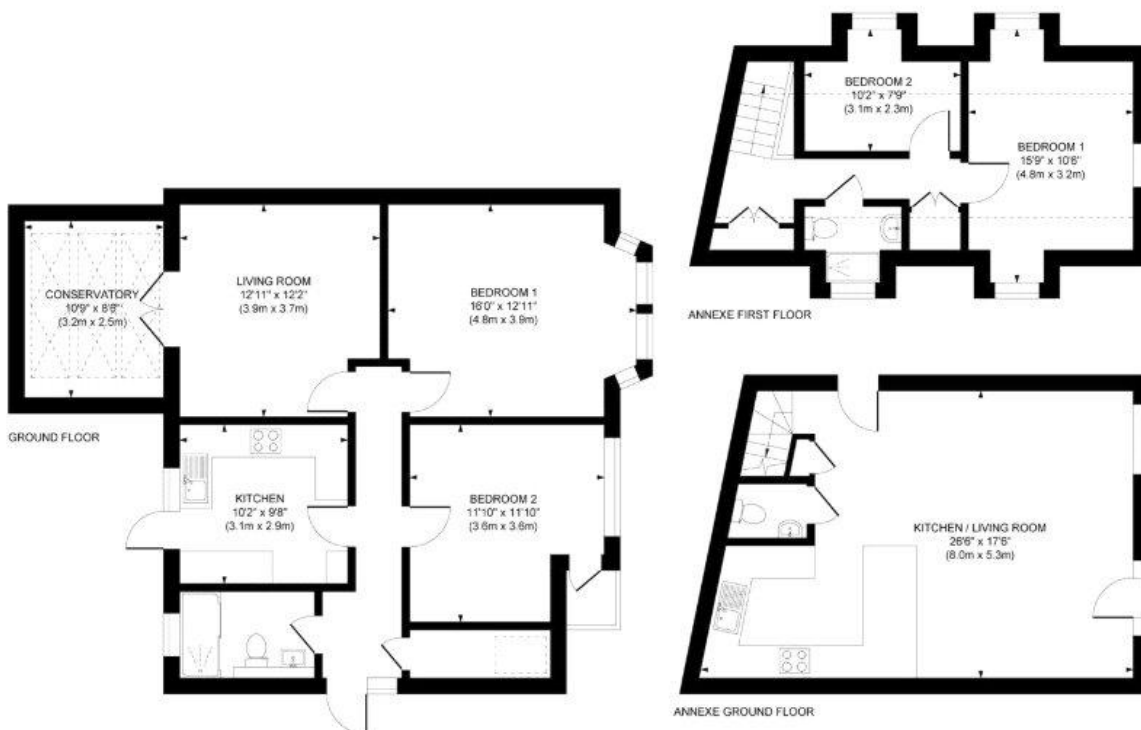
The annexe features spacious open plan living that includes a living room/diner, kitchen and cloakroom, whilst upstairs features two bedrooms and a family bathroom.

To view the Material Information Certificate for this property please click [Here](#) or contact us to request a copy

## Outside

Outside boasts a spacious south facing garden, which is an ideal space for alfresco dining and entertaining. It also includes driveway parking which provides off street parking for multiple vehicles.

## Floorplan



TO ARRANGE A VIEWING PLEASE CONTACT:  
Tel: 01252 361550 or Email: [info@bridges.co.uk](mailto:info@bridges.co.uk)



Important Notice - These particulars are set out as a general outline only for the guidance of intended purchasers/tenants and do not form part of any offer or contract and must not be relied upon as statements or representations of fact. Purchasers/Tenants must satisfy themselves by inspection or otherwise as to their correctness.