



Two Bedroom Semi-Detached House

Hale Reeds, Farnham, Surrey, GU9 9BN

Price: £415,000

- Two Double Bedrooms
- Semi Detached
- Spacious Rear Garden
- Spacious Lounge
- Well Presented Throughout
- Sought After Location
- On Street Parking
- EPC: D (66)



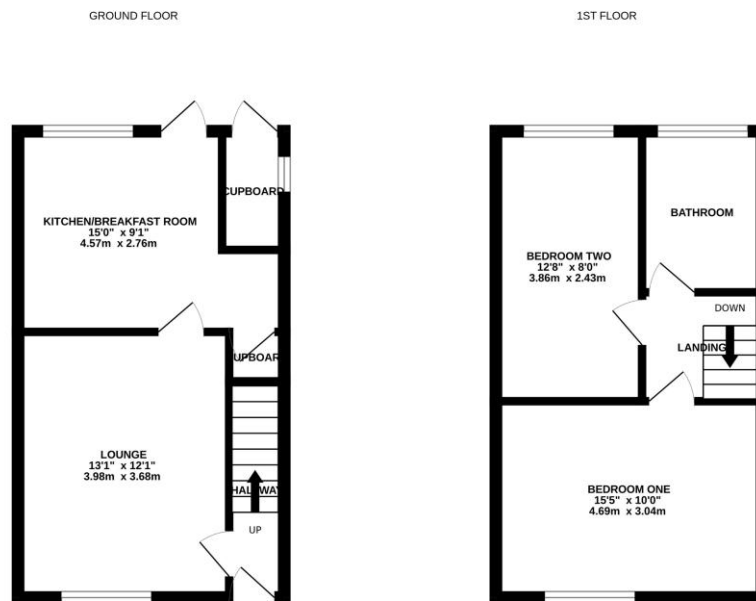
Description

Presenting this charming two bedroom semi detached property situated within walking distance to schools and Farnham Park. Having been well maintained by the current owners since purchasing, the spacious living accommodation in particular makes this a very sociable space with the original featured fireplace. The modern kitchen is positioned to the rear with pleasant views over the rear garden. To the first floor there are two bedrooms and a beautifully presented four piece modern bathroom suite.

Outside

Externally is just as impressive boasting a stunning rear garden of exceptional size, beautifully presented, laid to lawn with a shed for storage and further space to create a vegetable patch. There is side access and on street parking also available.

Floorplan



Whilst every attempt has been made to ensure the accuracy of the floorplan contained herein, measurements of plots, windows, rooms and any other items are approximate and no responsibility is taken for any errors, omission or mis-statement. This plan is for illustrative purposes only and should be used as such by any prospective purchaser. The services, systems and appliances shown have not been tested and no guarantee as to their operability or efficiency can be given.
Made with Metropex C2025



TO ARRANGE A VIEWING PLEASE CONTACT:
Tel: **01252 361550** or Email: **info@bridges.co.uk**



Important Notice - These particulars are set out as a general outline only for the guidance of intended purchasers/tenants and do not form part of any offer or contract and must not be relied upon as statements or representations of fact. Purchasers/Tenants must satisfy themselves by inspection or otherwise as to their correctness.