

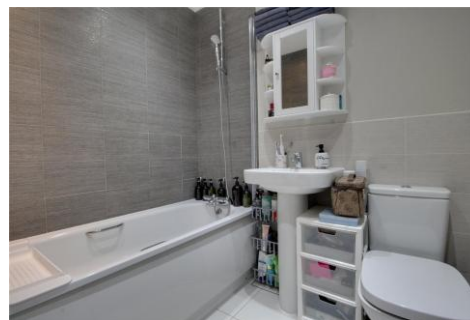


Four Bedroom Detached House

Gregory Drive, Church Crookham, Fleet, Hampshire, GU52 8BA

Price: £550,000

- Four Bedrooms
- Detached Family Home
- Kitchen/Dining
- En Suite
- Crookham Park
- Driveway & Garage
- Viewing Advised
- EPC: B (87)



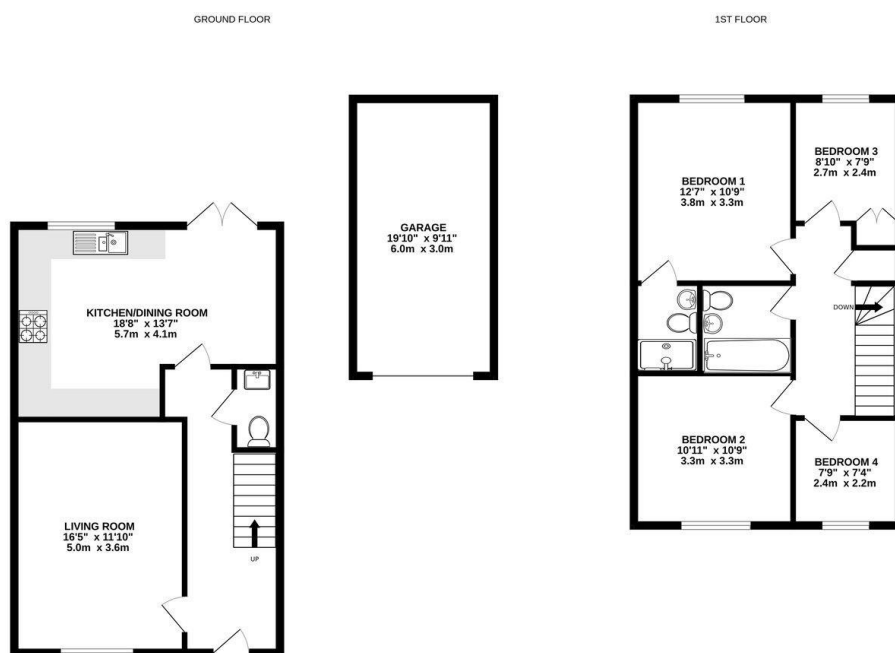
Description

A four bedroom detached family home, situated within the popular Crookham Park development and offered to the market with no onward chain complications. The accommodation comprises an entrance hall, a cloakroom, a living room, an open plan kitchen/dining room with French doors to the garden and a single garage on the ground floor. The first floor offers a principal bedroom with an en suite shower room, three further bedrooms and a modern family bathroom. Viewings are highly recommended and strictly by appointment only

Outside

A front lawn adjoins the driveway which leads to a single garage with an 'up and over' door. A side gate provides access to the enclosed rear garden which is mainly laid to lawn with a patio seating area.

Floorplan



Whilst every attempt has been made to ensure the accuracy of the floorplans contained here, measurements of doors, windows, rooms and any other items are approximate and no responsibility is taken for any error, omission or mis-statement. This plan is for illustrative purposes only and should be used as such by any prospective purchaser. The services, systems and appliances shown have not been tested and no guarantee as to their operability or efficiency can be given.
Made with Metropack (02023)



TO ARRANGE A VIEWING PLEASE CONTACT:
Tel: **01252 361550** or Email: **info@bridges.co.uk**



Important Notice - These particulars are set out as a general outline only for the guidance of intended purchasers/tenants and do not form part of any offer or contract and must not be relied upon as statements or representations of fact. Purchasers/Tenants must satisfy themselves by inspection or otherwise as to their correctness.