



## Two Bedroom Apartment

**Whitsbury House, Twyford Close, Fleet, Hampshire, GU51 1JY**

Offers in excess of: £230,000

- Two Bedrooms
- Top Floor Apartment
- Lounge with Juliet Balcony
- Fitted Kitchen
- Two Allocated Parking Spaces
- Ample Storage Cupboards
- Loft Access
- EPC: C (76)





## Description

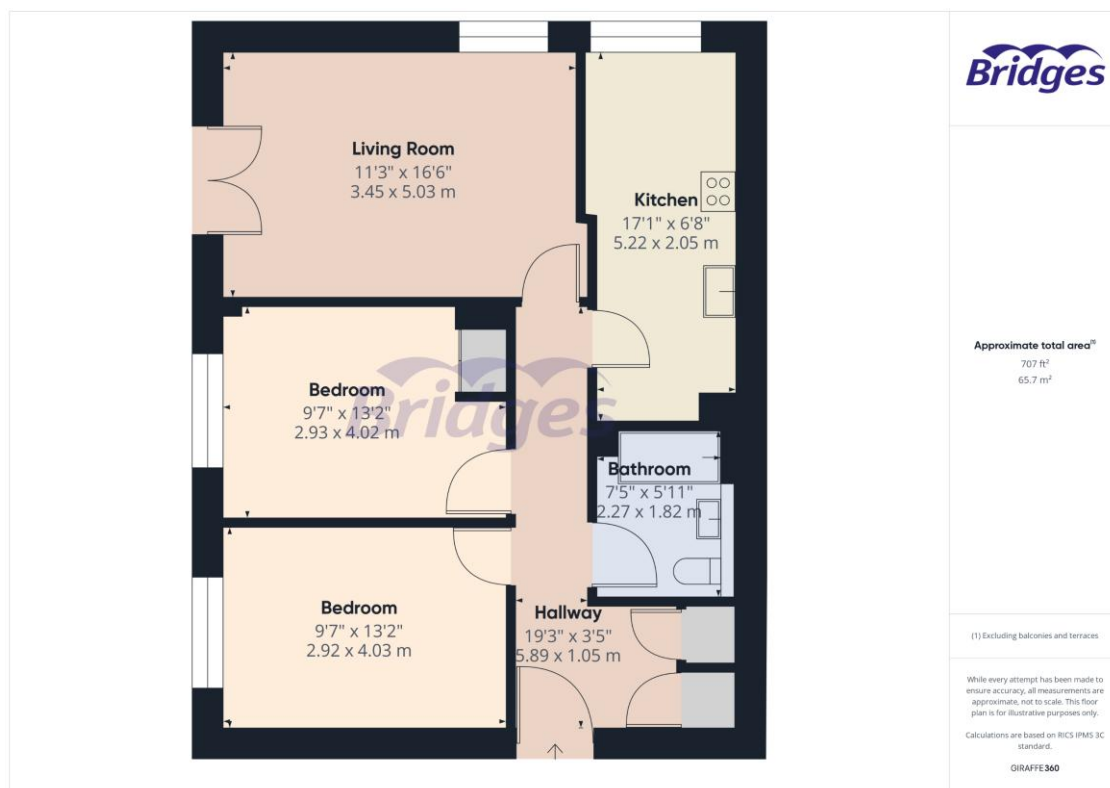
Offered to the market, this wonderful two-bedroom apartment, situated on the popular Elvetham Heath development, close to the nature reserve. The property offers a family bathroom, spacious kitchen, and a great sized living area with a Juliet balcony. There is ample storage with sizeable cupboards and further loft access.

## Outside

This property is tucked in the corner of the ever-popular Elvetham Heath development, overlooking the local park, and a short walk away from a nature reserve. The Heath boasts Morrisons supermarket, a primary school, and lovely pub. The property further offers allocated parking.

To view the Material Information Certificate for this property please click [Here](#) or contact us to request a copy.

## Floorplan



**TO ARRANGE A VIEWING PLEASE CONTACT:**  
Tel: **01252 361550** or Email: **info@bridges.co.uk**



**Important Notice** - These particulars are set out as a general outline only for the guidance of intended purchasers/tenants and do not form part of any offer or contract and must not be relied upon as statements or representations of fact. Purchasers/Tenants must satisfy themselves by inspection or otherwise as to their correctness.