



Three Bedroom Semi-Detached House

Silver Birch Way, Farnborough, Hampshire, GU14 9UP

Guide Price: £400,000

- Three Bedroom Semi Detached
- Dual Aspect 18ft Lounge
- Kitchen with Integrated Appliances
- Garage And Parking
- Two Bathroom Suites
- Downstairs Cloakroom
- Private Rear Garden
- EPC: TBC



Description

This three double bedroom home enjoys a distinctive arrangement and features an 18-foot lounge/diner area, with modern kitchen, cloakroom, offering two bathroom suites, a garage and a private rear garden. The modern property is set in Cove, preferred by families, due to the reputable schools, M3 and amenities and is sold with the convenience with no onward chain.

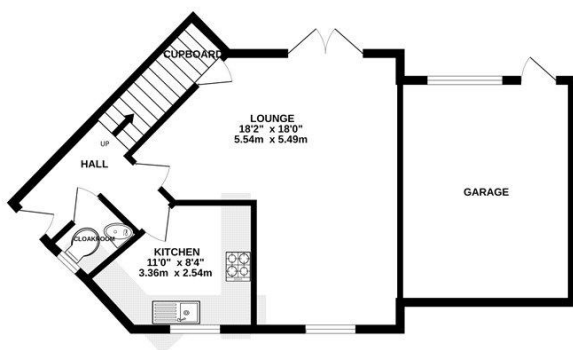
Outside

Externally, the property benefits from driveway parking to the front suitable for two cars, while to the rear, there is a private garden that is mainly laid to lawn, complemented by a paved patio, ideal for outdoor dining and entertaining.

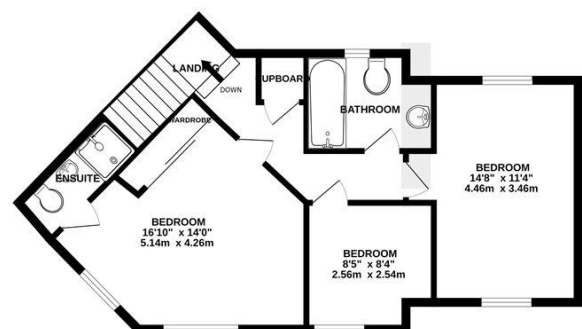
To view the Material Information Certificate for this property please click [Here](#) or contact us to request a copy.

Floorplan

GROUND FLOOR



1ST FLOOR



Whilst every attempt has been made to ensure the accuracy of the floorplan contained here, measurements of doors, windows, rooms and any other items are approximate and no responsibility is taken for any error, omission or mis-statement. This plan is for illustrative purposes only and should be used as such by any prospective purchaser. The services, systems and appliances shown have not been tested and no guarantee as to their operability or efficiency can be given.
Made with Metropix ©2025



TO ARRANGE A VIEWING PLEASE CONTACT:
Tel: **01252 361550** or Email: **info@bridges.co.uk**



Important Notice - These particulars are set out as a general outline only for the guidance of intended purchasers/tenants and do not form part of any offer or contract and must not be relied upon as statements or representations of fact. Purchasers/Tenants must satisfy themselves by inspection or otherwise as to their correctness.