



Two Bedroom Bungalow

Flexford Green, Bracknell, Berkshire, RG12 8GQ

Guide Price: £400,000

- Two Bedrooms
- Semi Detached Bungalow
- Living Room
- Kitchen
- Gas Radiator Heating
- Double Glazed Windows
- Driveway
- EPC: D (68)



Description

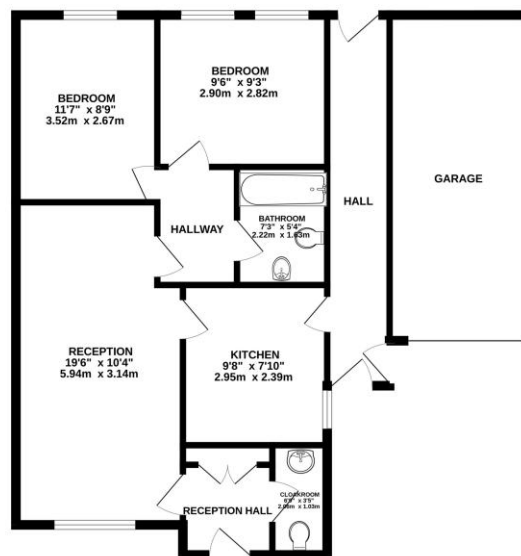
This well sized bungalow offers well planned living accommodation throughout. Compromises Entrance hallway that leads to a cloakroom, 19'6 foot living room, kitchen, two generously sized bedrooms and a bathroom. Located in a great location within close proximity to all local shops and amenities.

Outside

To the front there is a paved pathway leading to the front door with a front garden laid to lawn. Off road parking for three vehicles plus access to garage providing additional space. To the rear there is a low maintenance garden offering a degree of seclusion as it's all enclosed by a brick wall.

Floorplan

GROUND FLOOR



Whilst every attempt has been made to ensure the accuracy of the floorplan contained here, measurements of doors, windows, rooms and any other items are approximate and no responsibility is taken for any error, omission or misstatement. This plan is for guidance purposes only and should be used in conjunction with any prospective purchase. The accuracy, systems and equipment shown here has not been tested and no guarantee is made as to their operability or efficiency can be given. Made with Intertec CADD



TO ARRANGE A VIEWING PLEASE CONTACT:

Tel: **01344 962150** or Email:



Important Notice - These particulars are set out as a general outline only for the guidance of intended purchasers/tenants and do not form part of any offer or contract and must not be relied upon as statements or representations of fact. Purchasers/Tenants must satisfy themselves by inspection or otherwise as to their correctness.