

One Bedroom Apartment

Sopwith Drive, Farnborough, Hampshire, GU14 6GP

Guide Price: £220,000

- One Double Bedroom
- Modern Apartment
- Secure Entry System
- Allocated Parking and Visitor Bays
- Lift Access
- Communal Gardens
- Popular Location
- EPC: B (84)



Description

A spacious one bedroom apartment set in a popular development offering some great views, a modern high quality finish throughout, secure entry system and lift access to all floors.

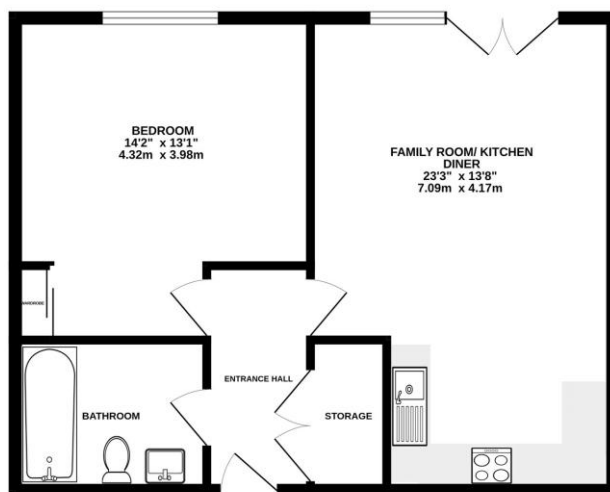
The layout consists of a good sized entrance hallway with double width storage, a sleek three piece family bathroom, generous double bedroom with wardrobes and a spacious kitchen/family room that offers a versatile space to relax with a Juliette balcony.

The development boasts a good amount of communal garden areas, secure children play area and both allocated and visitor parking bays around the development.

Outside

The development benefits from some well maintained communal grounds, allocated and visitor parking with access to the property via a secure entry system. The development also benefits from a secure gated family play area offering peace of mind and there are a host of local shops amenities and the town centre within walking distance.

Floorplan



While every attempt has been made to ensure the accuracy of the floorplan contained here, measurements of doors, windows, rooms and any other items are approximate and no responsibility is taken for any error, omission or misstatement. This plan is for illustrative purposes only and should be used as a guide only. prospective purchaser. The services, appliances and equipment shown have not been tested and no guarantee as to their operability or efficiency can be given.
Made with Metaphor CDD3



TO ARRANGE A VIEWING PLEASE CONTACT:
Tel: **01252 361550** or Email: **info@bridges.co.uk**



Important Notice - These particulars are set out as a general outline only for the guidance of intended purchasers/tenants and do not form part of any offer or contract and must not be relied upon as statements or representations of fact. Purchasers/Tenants must satisfy themselves by inspection or otherwise as to their correctness.