



## Two Bedroom Maisonette

**Grosvenor Road, Aldershot, Hampshire, GU11 3DZ**

Guide Price: £220,000

- Two Double Bedrooms
- A Stunning Split Level Maisonette
- Working Open Fires
- Original Features Throughout
- Tastefully Decorated
- Must be Seen to be Appreciated
- Short Walk to All Amenities
- EPC: E (46)





## Description

A stunning Victorian converted maisonette set over two floors offering modern day living with original features and working open fires. On entering the property you have a tastefully decorated property, which offers two double bedrooms, along with an immaculately presented living space. Located just a short walk to the train station, which offers direct links to London Waterloo, this exceptional home is also within walking distance of popular schools and picturesque walks.

## Outside

The property benefits from being just a short walk to the mainline station, overlooking Municipal Gardens.

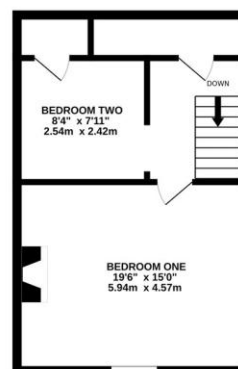
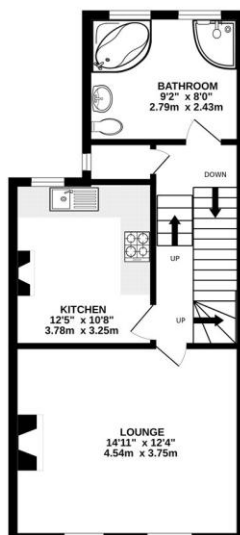
To view the Material Information Certificate for this property please click [Here](#) or contact us to request a copy.

## Floorplan

GROUND FLOOR

1ST FLOOR

2ND FLOOR



Whilst every attempt has been made to ensure the accuracy of the floorplan contained here, measurements of doors, windows, rooms and any other items are approximate and no responsibility is taken for any error, omission or mis-statement. This plan is for illustrative purposes only and should be used as such by any prospective purchaser. The services, systems and appliances shown have not been tested and no guarantee as to their operability or efficiency can be given.  
Made with Metropix C3025



**TO ARRANGE A VIEWING PLEASE CONTACT:**  
Tel: **01252 361550** or Email: **info@bridges.co.uk**



**Important Notice - These particulars are set out as a general outline only for the guidance of intended purchasers/tenants and do not form part of any offer or contract and must not be relied upon as statements or representations of fact. Purchasers/Tenants must satisfy themselves by inspection or otherwise as to their correctness.**