

Three Bedroom Terraced House

Tintern Close, Basingstoke, Hampshire, RG24 9HE

Offers Over: £275,000

- Three Bedrooms
- Terraced House
- Kitchen
- Ample Storage
- South Facing Rear Garden
- Close to Schools
- Communal Parking
- EPC: TBC



Description

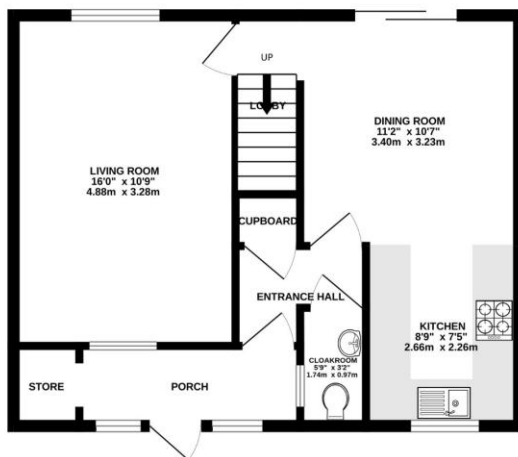
Offered to the market is this three bedroom family home located in Popley. The ground floor accommodation comprises a porch with a spacious storage cupboard, a hallway with a cloakroom and another storage cupboard, a kitchen, a dining room, and a lounge. Upstairs there are three well proportioned bedrooms two of which are doubles, and a further single with a walk in wardrobe. Furthermore, there is a three piece family bathroom.

Outside

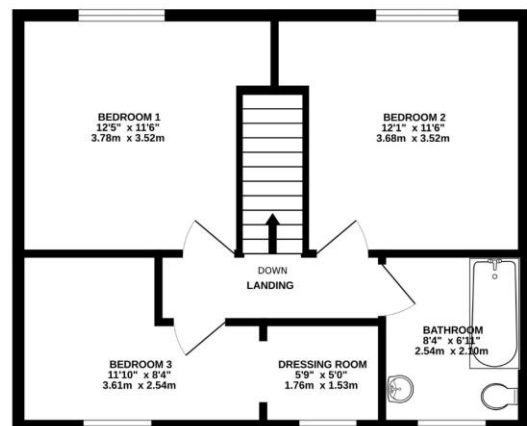
Externally there is ample communal parking, an enclosed rear garden which is predominantly south facing, and there is a front garden.

Floorplan

GROUND FLOOR



1ST FLOOR



Whilst every attempt has been made to ensure the accuracy of the floorplan contained here, measurements of doors, windows, rooms and any other items are approximate and no responsibility is taken for any error, omission or mis-statement. This plan is for illustrative purposes only and should be used as such by any prospective purchaser. The services, systems and appliances shown have not been tested and no guarantee as to their operability or efficiency can be given.

Made with Metropix ©2024



TO ARRANGE A VIEWING PLEASE CONTACT:
Tel: **01256 880001** or Email: **info@bridges.co.uk**



Important Notice - These particulars are set out as a general outline only for the guidance of intended purchasers/tenants and do not form part of any offer or contract and must not be relied upon as statements or representations of fact. Purchasers/Tenants must satisfy themselves by inspection or otherwise as to their correctness.