



## Two Bedroom Detached Apartment

**Meadow Court, Anchor Meadow, Farnborough, Hampshire, GU14**

Guide Price: £200,000

- Two Double Bedrooms
- First Floor Apartment
- Close to Town Centre and Station
- Close to Local Amenities
- Double Glazed
- No Onward Chain
- Estimated Rental Price £1,100 pcm
- EPC: E (39)





## Description

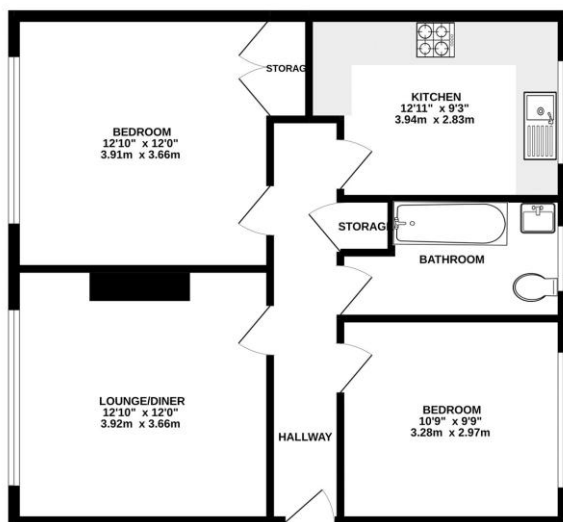
Situated in Cove village is this two bedroom first floor apartment offered to the market in good condition throughout and being sold with no onward chain complications. Internally the property benefits from a refitted kitchen/breakfast room, a separate lounge/diner, two bedrooms one with fitted storage and a refitted three piece bathroom suite. Viewings recommended!

## Outside

Externally the property benefits from well kept communal grounds which are mainly laid to lawn.

## Floorplan

GROUND FLOOR



While every attempt has been made to ensure the accuracy of the floorplan contained herein, measurements of doors, windows, rooms and any other items are approximate and no responsibility is taken for any error, omission or misstatement. This plan is for illustrative purposes only and should be used as such by any prospective purchaser. The services, fixtures and appliances shown have not been tested and no guarantee as to their operation or efficiency can be given. Made with Metaphor 12/2012



**TO ARRANGE A VIEWING PLEASE CONTACT:**  
Tel: **01252 361550** or Email: **info@bridges.co.uk**



**Important Notice** - These particulars are set out as a general outline only for the guidance of intended purchasers/tenants and do not form part of any offer or contract and must not be relied upon as statements or representations of fact. Purchasers/Tenants must satisfy themselves by inspection or otherwise as to their correctness.