

Two Bedroom Apartment

Sherborne Road, Farnborough, Hampshire, GU14 6HT

Guide Price: £225,000

- Two Double Bedrooms
- Modern Flat North Camp Village
- En Suite to Principal Bedroom
- Family Bathroom
- Modern Fitted Kitchen
- Resident Parking
- 16 Feet Living/Dining Room
- EPC: C (79)



Description

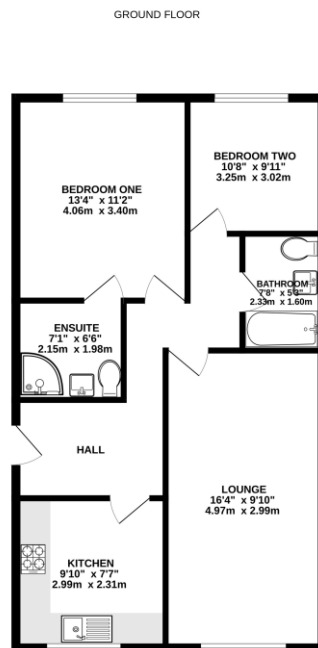
Located in the popular Sylvan Court development in North Camp, this well proportioned two double bedroom apartment offers comfortable, modern living in a convenient location. The property features a bright and spacious living room, a separate fully fitted kitchen, and two generous double bedrooms - ideal for sharers, couples, or small families. The main bedroom benefits from an en suite shower room, while a stylish main bathroom serves the rest of the apartment. Further benefits include two allocated parking spaces, and secure entry to the building. Perfectly positioned for access to North Camp's local shops, amenities, and transport links - including North Camp and Farnborough train stations. This apartment offers both comfort and convenience in a well maintained development. Ideal as a first time buy or investment opportunity.

Outside

The property features communal areas of lawn and a bin shed. There are also two allocated parking spaces.

To view the Material Information Certificate for this property please click [Here](#) or contact us to request a copy.

Floorplan



We have every attempt to ensure the accuracy of the floorplan contained here, measurements of doors, windows, rooms and any other items are approximate and no responsibility is taken for any error, omission or misstatement. This plan is for illustrative purposes only and should be used as a guide only by the prospective purchaser. The services, fixtures and appliances shown here are for illustrative purposes and no guarantee is made as to their operability or efficiency can be given. Made with Hoxton 12/02



TO ARRANGE A VIEWING PLEASE CONTACT:
Tel: 01252 361550 or Email: info@bridges.co.uk



Important Notice - These particulars are set out as a general outline only for the guidance of intended purchasers/tenants and do not form part of any offer or contract and must not be relied upon as statements or representations of fact. Purchasers/Tenants must satisfy themselves by inspection or otherwise as to their correctness.