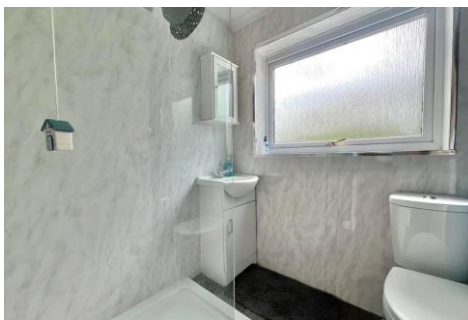




Three Bedroom Semi-Detached House Brookfield Road, Aldershot, Hampshire, GU12 4UR

Guide Price: £385,000

- Extended Three Bedroom Family Home
- Driveway Parking and a Garage
- Idyllic Established Garden
- No Onward Chain Complications
- Well Regarded Residential Road
- Must be Seen to be Appreciated
- Open Plan Reception Rooms
- EPC: TBC



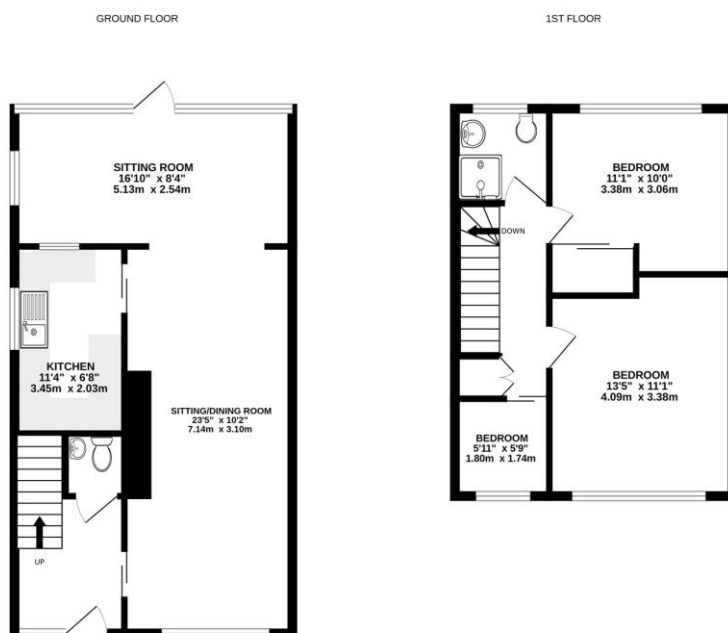
Description

A well presented semi-detached family home, which is offered to the market for the first time in sixty years. Positioned in one of Aldershot's most sought after residential locations with the Blackwater river at the rear of the garden. Set over two floors and with internal accommodation presented in good order, but in need of some modernisation. The property benefits from three bedrooms, open plan reception rooms and a garage. There is great potential to extend further subject to the necessary planning consent. The ground floor boasts a welcoming entrance hall, which leads you to either the lounge/dining room or kitchen. The first floor offers a principal bedroom with built in wardrobes, with a further two bedrooms and a family bathroom. Located just 1.6 miles from the train station, which offers direct links to London Waterloo, this exceptional family home is also within walking distance of children's play areas, popular schools and the Basingstoke Canal.

Outside

Positioned on a generous plot you can find a low maintenance front garden with a driveway providing ample parking for multiple vehicles. The landscaped garden provides a good degree of privacy and seclusion, incorporating an area of lawn and patio with established trees, plants and shrubs. Perfect for both entertaining and relaxing, to the rear of the garden is the Blackwater River.

Floorplan



Whilst every attempt has been made to ensure the accuracy of the floorplan contained herein, measurements of doors, windows, rooms and any other items are approximate and no responsibility is taken for any error, omission or misstatement. This plan is for illustrative purposes only and should be used as such by any prospective purchaser. The services, systems and appliances shown have not been tested and no guarantee as to their operability or efficiency can be given. Made with Metreplan 12/02.



TO ARRANGE A VIEWING PLEASE CONTACT:
Tel: **01252 361550** or Email: **info@bridges.co.uk**



Important Notice - These particulars are set out as a general outline only for the guidance of intended purchasers/tenants and do not form part of any offer or contract and must not be relied upon as statements or representations of fact. Purchasers/Tenants must satisfy themselves by inspection or otherwise as to their correctness.