

Two Bedroom Semi-Detached Bungalow

Kings Avenue, Tongham, Surrey, GU10 1AU

Offers in Excess of: £425,000

- Two Bedroom Semi-Detached Bungalow
- Driveway Parking for Number of Vehicles
- Well Presented Throughout
- Good Sized Garden
- Outbuilding with Power and Lighting
- Kitchen/Breakfast Room
- Potential to Extend Subject to Planning
- EPC: TBC



Description

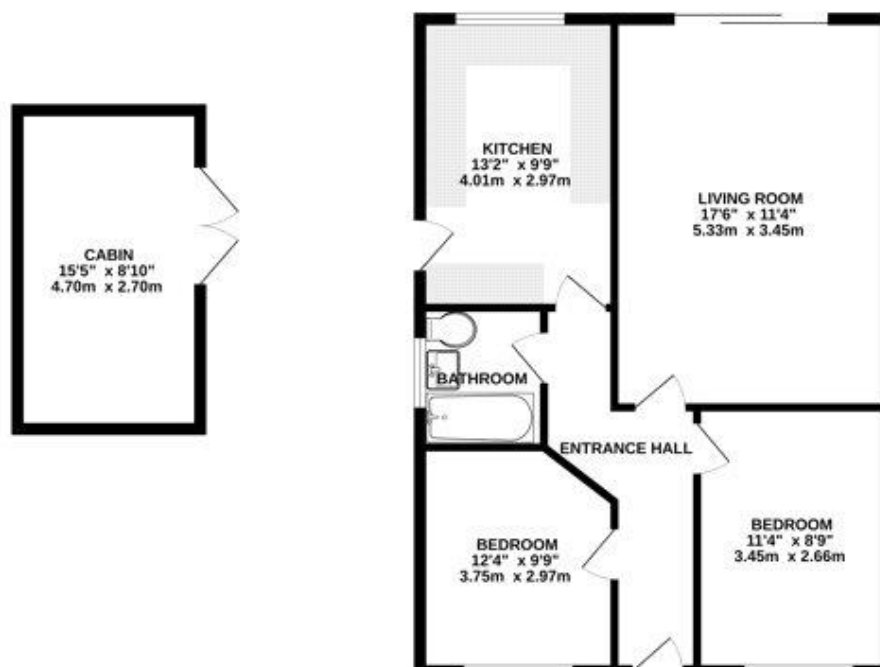
Located within the popular village of Tongham, and within walking distance to the local schools and amenities, is this extended and spacious two bedroom semi-detached bungalow. The bungalow boasts a spacious living room/diner, which includes doors leading out into the generous south facing rear garden. You will also find a refitted kitchen/breakfast room with plenty of cupboard and wardrobe space, two good sized double bedrooms and a family bathroom suite. There is also a paved driveway to the front with parking for several vehicles. Give us a call today to book your viewing!

Outside

Outside boasts driveway parking for a number of vehicles and a utility room/workshop as well as a good sized garden and an outbuilding with power and lighting.

To view the Material Information Certificate for this property please click [Here](#) or contact us to request a copy.

Floorplan



TO ARRANGE A VIEWING PLEASE CONTACT:
Tel: **01252 361550** or Email: info@bridges.co.uk



Important Notice - These particulars are set out as a general outline only for the guidance of intended purchasers/tenants and do not form part of any offer or contract and must not be relied upon as statements or representations of fact. Purchasers/Tenants must satisfy themselves by inspection or otherwise as to their correctness.