



Four Bedroom Detached Bungalow

Newfield Road, Ash Vale, Surrey, GU12 5LG

Offers in excess of: £800,000

- Four/Five Bedrooms
- Two Bathrooms
- Large Kitchen/Dining Room
- Approx 1/3 Acre Plot
- Large Garage
- Beautiful Garden
- Sought After Road
- EPC: TBC



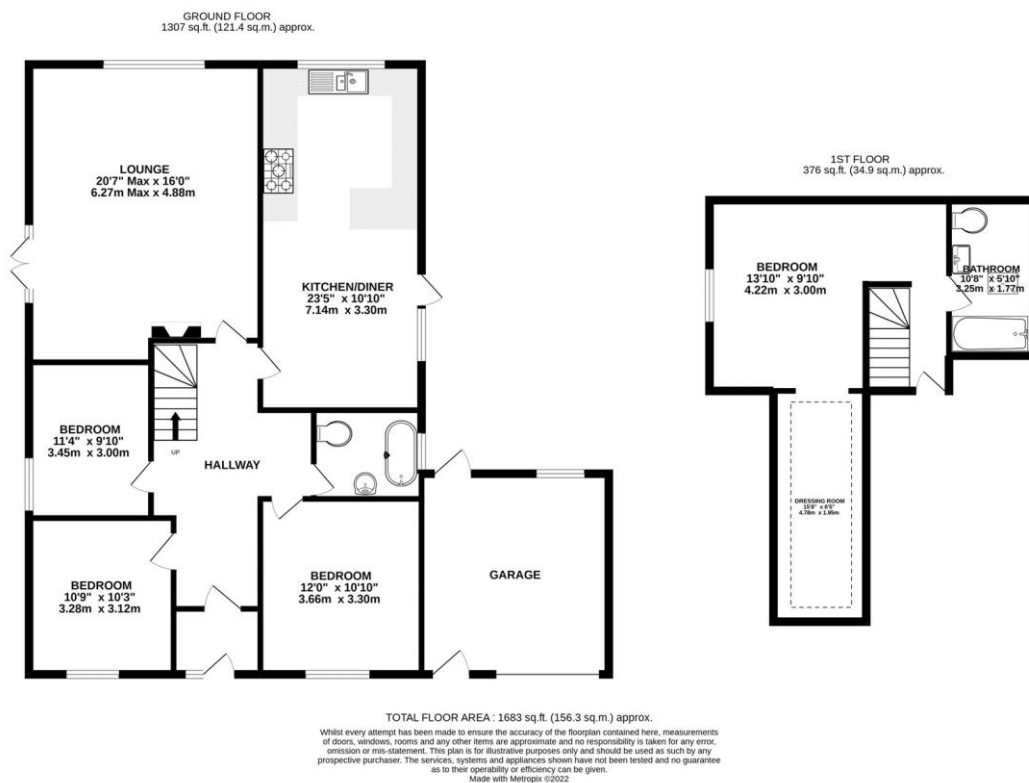
Description

A magnificent four/five bedroom detached chalet style home, located in a highly sought after road very close to Ash Vale mainline train station. The property is also close to both the Basingstoke Canal and the Ash Rangers heathland, with 1000s of acres available for walks and outdoor pursuits. Sitting on a corner plot of approximately 1/3 of an acre, the garden is a huge feature - with well manicured lawns and a large decking area, which is perfect for outside entertaining and alfresco dining. The property has been fully renovated by the current vendors. The ground floor boasts two bathrooms and a fantastic kitchen/diner - as well as a living room with French doors leading out onto the decking area. You will also find three bedrooms on the ground floor. Upstairs, the property boasts another bedroom with a dressing room area and an en suite. Additional benefits include a large garage, carport and sheds to the rear of the garden. Early viewings are highly recommended to appreciate everything this fantastic property has to offer.

Outside

Sitting on a corner plot of approximately 1/3 of an acre, there is driveway parking to the front for several vehicles leading to a side access with a hard standing carport. There is a large lawned side garden with a large decking area, which is ideal for entertaining. The garden is fully enclosed with panel fencing and sheds.

Floorplan



TO ARRANGE A VIEWING PLEASE CONTACT:
Tel: **01252 361550** or Email: **info@bridges.co.uk**



Important Notice - These particulars are set out as a general outline only for the guidance of intended purchasers/tenants and do not form part of any offer or contract and must not be relied upon as statements or representations of fact. Purchasers/Tenants must satisfy themselves by inspection or otherwise as to their correctness.