



CHATTER ALLEY | DOGMERSFIELD

  
**Platinum  
Homes**  
BY BRIDGES





## The Property

Platinum Homes are delighted to present to the market this stunning four bedroom detached family home situated in the parish of Dogmersfield in the Hampshire countryside. The house is arranged over two floors and is presented beautifully throughout.

The ground floor boasts three reception rooms, a kitchen/breakfast room, utility room, and a downstairs study. Through the utility room is access to the double garage. The conservatory extension provides access to the beautifully mature, landscaped garden.

The four double bedrooms to the first floor are accessed from a spacious landing, three of the four bedrooms offer en suite bath/shower rooms and there is an additional family bathroom.

The south facing rear garden is a real spectacle of this property. It adjoins open fields to one side and has been beautifully maintained by the current owners.

## Outside

The property is situated in the very heart of Dogmersfield which has an excellent primary school, the well renowned Four Seasons Hotel Spa and Restaurant, and within a short walk of this home is The Queens Head public house.

The village is easily accessible to the nearby towns of Fleet, Farnham, and Odiham.







## Features

- Four Bedrooms
- Three Reception Rooms
- Three En Suite Bathrooms
- Manicured Gardens
- Double Garage
- 0.25 Acre Plot
- Village Location
- EPC: C (76)
- Council Tax Band: G

## Contact

**Philip Gascoyne**

[pgascoyne@platinumbybridges.co.uk](mailto:pgascoyne@platinumbybridges.co.uk)

01252 975501

  
**Platinum  
Homes**  
BY BRIDGES



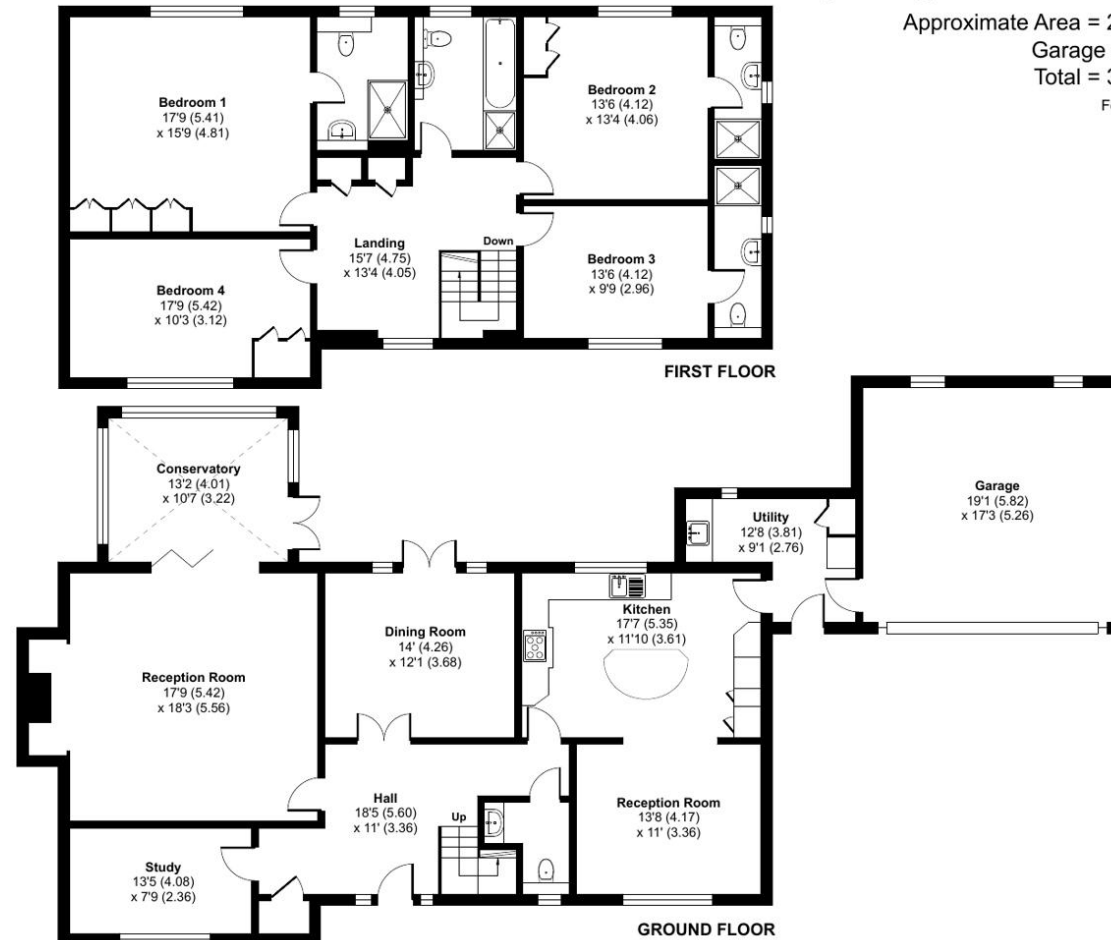
## Chatter Alley, Dogmersfield, Hook, RG27

Approximate Area = 2768 sq ft / 257.1 sq m

Garage = 329 sq ft / 30.5 sq m

Total = 3097 sq ft / 287.7 sq m

For identification only - Not to scale



**Certified  
Property  
Measurer**

Floor plan produced in accordance with RICS Property Measurement Standards incorporating International Property Measurement Standards (IPMS2 Residential). © nichecom 2024. Produced for Bridges Estate Agents Ltd (Platinum Homes). REF: 1088477

  
**Platinum  
Homes**  
BY BRIDGES

Important Notice - These particulars are set out as a general outline only for the guidance of intended purchasers and do not form part of any offer or contract and must not be relied upon as statements or representations of fact. Purchasers must satisfy themselves by inspection or otherwise as to their correctness.



