



## Three Bedroom Semi-Detached House

**Gardenia Drive, Wrecclesham, Farnham, Surrey, GU10 4BL**

Price: £575,000

- Three Bedroom House
- Spacious Lounge/Dining Room
- Extended Orangery
- Driveway/Garage
- Built in 2019
- Sought After Location
- Close to Popular Schools
- EPC: B (85)





## Description

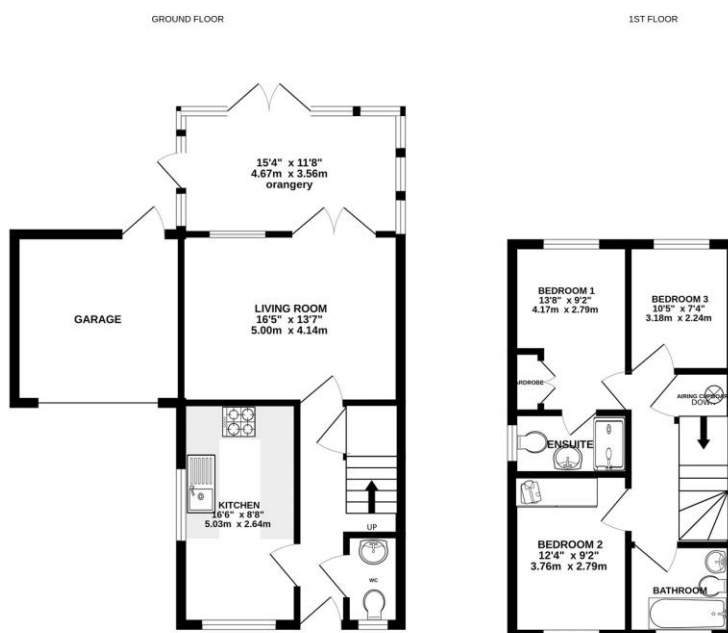
Built in 2019 by Bewley Homes is this beautifully presented three bedroom semi-detached home situated close to sought after schools and within easy reach of untouched countryside. The ground floor comprises an open plan lounge area which opens into a spacious orangery towards the rear currently used as a dining area, having been extended by the current owners this makes for the ideal place to entertain guests. Additionally, there is a fully integrated modern kitchen, downstairs cloakroom, and an understairs storage cupboard. The first floor offers three well proportioned bedrooms with the principal bedroom having the added luxury of an en suite shower room. A family bathroom suite makes up the rest of the first floor.

## Outside

Externally, there is a driveway to the front providing parking for multiple vehicles. The rear garden is well stocked with a selection of beautifully displayed shrubs and flowers and features a patio area that is suitable for entertaining guests.

To view the Material Information Certificate for this property please click [Here](#) or contact us to request a copy.

## Floorplan



TO ARRANGE A VIEWING PLEASE CONTACT:  
Tel: **01252 361550** or Email: **info@bridges.co.uk**



Important Notice - These particulars are set out as a general outline only for the guidance of intended purchasers/tenants and do not form part of any offer or contract and must not be relied upon as statements or representations of fact. Purchasers/Tenants must satisfy themselves by inspection or otherwise as to their correctness.