



Three Bedroom End of Terrace House

Grayswood Drive, Mytchett, Camberley, Surrey, GU16 6AP

Price: £350,000

- Three Bedrooms
- Potential to Extend (STPP)
- Garage
- Substantial Plot
- Sought After Location
- Close to the Basingstoke Canal
- No Onward Chain
- EPC: D (66)



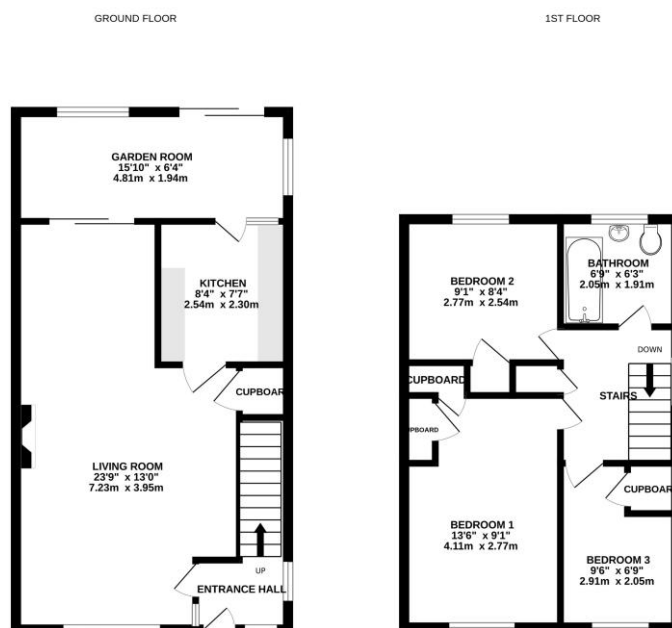
Description

A three bedroom end of terrace property, in need of modernising, sitting on a generous plot with potential for further expansion (STPP). The plot to the side measures approximately 22ft. The property is located in a popular road in Mytchett within close proximity to the Basingstoke Canal. Ground floor accommodation includes a living room, kitchen, and sunroom. The first floor includes three bedrooms and a family bathroom.

Outside

Outside you will find a substantially sized wrap around garden and a single garage to the rear.

Floorplan



Whilst every attempt has been made to ensure the accuracy of the floorplan contained here, measurements of floors, walls, doors and any other items are approximate and no responsibility is taken for any error, omission or mis-statement. This plan is for illustrative purposes only and should be used as such by any prospective purchaser. The contents, systems and appliances shown have not been tested and no guarantee as to their operability or efficiency can be given. Made with Metaplan 10/2015



TO ARRANGE A VIEWING PLEASE CONTACT:
Tel: **01252 361550** or Email: **info@bridges.co.uk**



Important Notice - These particulars are set out as a general outline only for the guidance of intended purchasers/tenants and do not form part of any offer or contract and must not be relied upon as statements or representations of fact. Purchasers/Tenants must satisfy themselves by inspection or otherwise as to their correctness.