

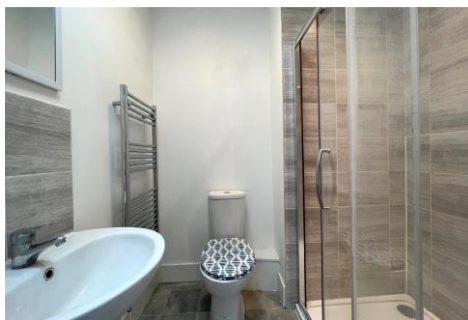


Two Bedroom Semi-Detached House

Church View, Ash, Surrey, GU12 6RT

Price: £425,000

- Two Bedroom Semi-Detached Home
- En Suite
- Cloakroom
- No Chain
- Driveway Parking for a Number of Vehicles
- Walking Distance to Ash Rail Station
- Kitchen/Diner
- EPC: B (81)



Description

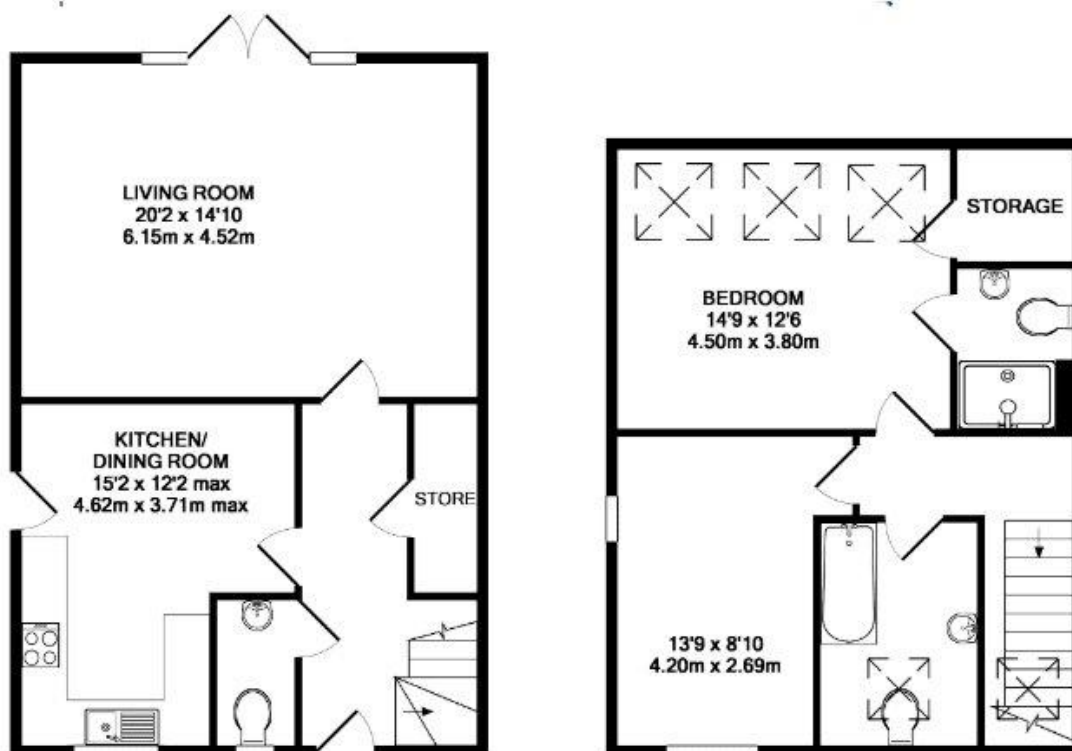
****NO CHAIN**** Set in a quiet no through road, and within walking distance of Ash station and the local amenities, is this spacious two bedroom semi-detached home. The accommodation is significant to say the least, boasting just under 1200 sqft of living space. The downstairs boasts a large living room with doors leading out into the garden - as well as a kitchen/diner with plenty of storage and work top space. You will also find a cloakroom. Upstairs benefits from two double bedrooms, an en suite to bedroom one and a family bathroom. Give us a call today to book your viewing!

Outside

Outside boasts driveway parking for a number of vehicles, a private south west facing garden and side access.

To view the Material Information Certificate for this property please click [Here](#) or contact us to request a copy.

Floorplan



TO ARRANGE A VIEWING PLEASE CONTACT:
Tel: **01252 361550** or Email: **info@bridges.co.uk**



Important Notice - These particulars are set out as a general outline only for the guidance of intended purchasers/tenants and do not form part of any offer or contract and must not be relied upon as statements or representations of fact. Purchasers/Tenants must satisfy themselves by inspection or otherwise as to their correctness.