



Three Bedroom Semi-Detached House

Yeomans Lane, Blackwater, Camberley, Hampshire, GU17 9FG

Price: £450,000

- Three Bedrooms
- Semi Detached Family Home
- Popular Helios Park Development
- Garage and Driveway
- Close to Hawley Lake
- Easy Access to M3
- Over 5 Years Warranty Remaining
- EPC: B (84)



Description

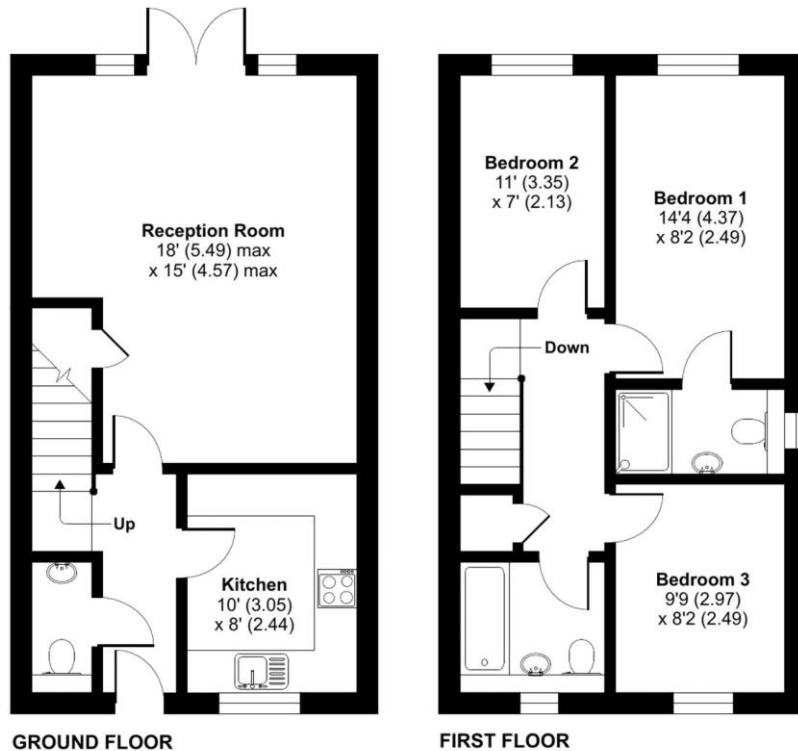
Situated on the popular Helios Park Development, and benefitting from over five years warranty remaining, a well presented three bedroom semi-detached family home. The ground floor comprises a well equipped kitchen, a spacious living/dining room to the rear with French doors leading to the garden, a cloakroom and a storage cupboard. Upstairs there are three bedrooms, with an en suite to the main bedroom and a family bathroom. This family home benefits from being near to Hawley Lake, Hawley woodland which offer fantastic walking routes as well as being extremely well situated for excellent road links.

Outside

To the front of the property there is a small well maintained garden, to the side leading to the garage, there is parking for multiple vehicles. With a side gate leading to the rear garden which is mainly laid to lawn with a patio area ideal for BBQs!

To view the Material Information Certificate for this property please click [Here](#) or contact us to request a copy.

Floorplan



TO ARRANGE A VIEWING PLEASE CONTACT:

Tel: 01276 685544 or Email:

camberley@bridges.co.uk



Important Notice - These particulars are set out as a general outline only for the guidance of intended purchasers/tenants and do not form part of any offer or contract and must not be relied upon as statements or representations of fact. Purchasers/Tenants must satisfy themselves by inspection or otherwise as to their correctness.