



Two Bedroom Apartment

Ifould Crescent, Wokingham, Berkshire, RG40 1LB

Price: £290,000

- Two Double Bedrooms
- Principal Bedroom with En Suite
- Ground Floor Apartment
- Open Plan Living/Kitchen/Dining Area
- Good Decorative Order
- Easy Access Town and Transport Link
- Ideal Investment/First Time Buy
- EPC: B (84)



Description

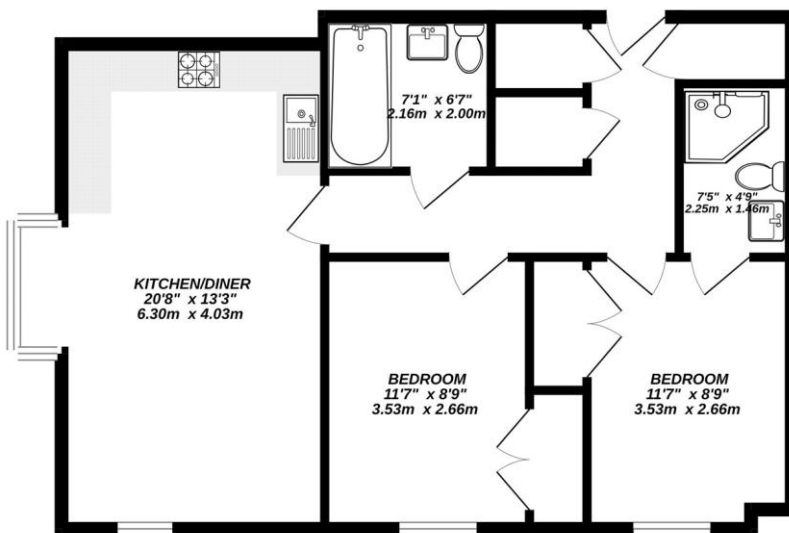
A modern and contemporary ground floor apartment ideally located for easy access to Wokingham town and transport links. The property offers a spacious living/dining/kitchen area, two double bedrooms, the principal including an en suite, good decorative order, modern bathroom, spacious hallway, communal area with bike shed, visitor and resident parking. IDEAL INVESTMENT/FIRST BUY.

Outside

Externally, there is a communal door entry system with access to the apartments within the block, communal grounds, grass and patio and bike store. The communal grounds also offer outside space to relax and enjoy, one allocated parking space and visitor's spaces.

Floorplan

GROUND FLOOR



Measurements are approximate. Not to scale. Illustrative purposes only.
Made with Metropix ©2023



TO ARRANGE A VIEWING PLEASE CONTACT:

Tel: **01344 962150** or Email:



Important Notice - These particulars are set out as a general outline only for the guidance of intended purchasers/tenants and do not form part of any offer or contract and must not be relied upon as statements or representations of fact. Purchasers/Tenants must satisfy themselves by inspection or otherwise as to their correctness.