



Three Bedroom Terraced House

Alsace Walk, Camberley, Surrey, GU15 2SJ

Offers in excess of: £325,000

- Three Bedrooms
- Refitted Bathroom
- Driveway to The Rear
- Garage
- Quiet Cul-de-Sac
- Close to Frimley Park Hospital
- Spacious Living/Dining Room
- EPC: D (64)



Description

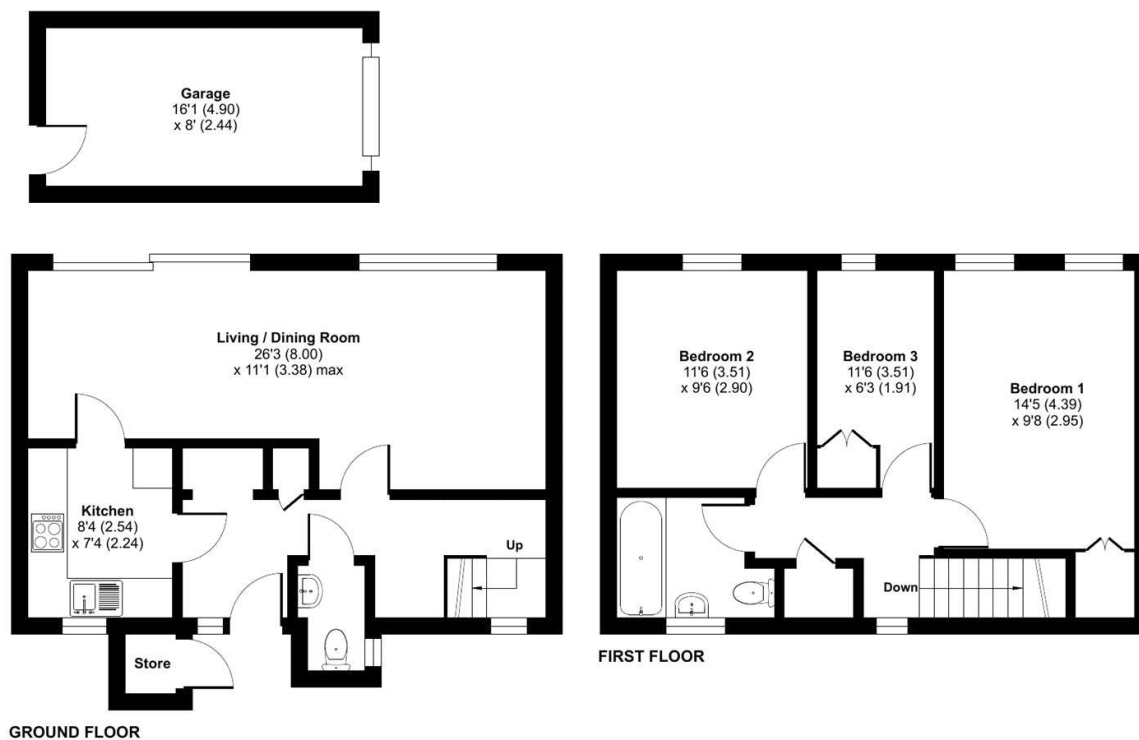
Situated in a quiet sought after location is this three bedroom family home. The ground floor comprises a substantial living/dining room, a separate kitchen and a refitted cloakroom. Upstairs are three bedrooms, two of which are doubles and the refitted family bathroom. The property is conveniently situated for both Camberley town centre and Frimley High Street. Furthermore there are great transport links such as Farnborough Main train station with direct links to London Waterloo, as well as the A30, A331 and M3.

Outside

To the front of the property, you are met with a front garden. At the rear there is driveway parking and a garage. The garden is mainly laid to lawn with a patio area.

To view the Material Information Certificate for this property please click [Here](#) or contact us to request a copy.

Floorplan



TO ARRANGE A VIEWING PLEASE CONTACT:

Tel: 01276 685544 or Email:

camberley@bridges.co.uk



Important Notice - These particulars are set out as a general outline only for the guidance of intended purchasers/tenants and do not form part of any offer or contract and must not be relied upon as statements or representations of fact. Purchasers/Tenants must satisfy themselves by inspection or otherwise as to their correctness.