



Three Bedroom Detached House

Greenham Wood, Bracknell, Berkshire, RG12 7WJ

Price: £480,000

- Three Bedroom Detached Family Home
- Two Reception Rooms
- Easy Access to South Hill Park, Schools and Amenities
- Modern Bathroom and Downstairs Cloakroom
- Good Size Rear Garden
- Driveway and Garage
- Scope to Extend (STPP)
- EPC: D (64)



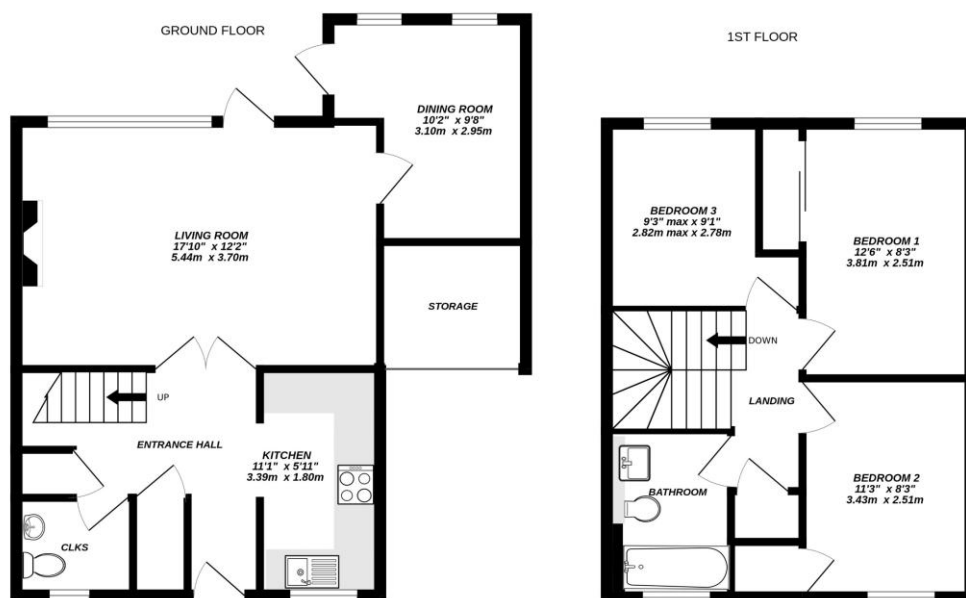
Description

Tucked away elevated in a popular cul-de-sac within the ever popular area Birch Hill is this three bedroom detached family home. Set within easy access to South Hill Park, local schools, supermarket, amenities and travel links. The property offers a modern fitted bathroom and downstairs cloakroom, two receptions, a good size secluded rear garden, scope to extend (STPP), driveway and garage, ideal family home.

Outside

The rear garden consists of a slab patio area leading on to lawn, flower bed, side access gate, outside light all enclosed by wood panel fencing. To the front there is a communal green area, driveway and garage.

Floorplan



Measurements are approximate. Not to scale. Illustrative purposes only.
Made with Metropix ©2025



TO ARRANGE A VIEWING PLEASE CONTACT:

Tel: 01344 962150 or Email:



Important Notice - These particulars are set out as a general outline only for the guidance of intended purchasers/tenants and do not form part of any offer or contract and must not be relied upon as statements or representations of fact. Purchasers/Tenants must satisfy themselves by inspection or otherwise as to their correctness.