



## Five Bedroom Detached House

**Curlew Grove, Blackwater, Camberley, Hampshire, GU17 0SF**

Guide Price: £900,000

- Five Bedrooms
- Two Reception Rooms
- Three Bathrooms
- Open Plan Kitchen/breakfast room/Dining Room
- Enclosed rear garden
- Single Garage
- Driveway Parking
- EPC: TBC





## Description

Welcome to this exquisite 5 bedroom property measuring over 2440 sq ft, built by Bloor Homes just 10 years ago, offering modern living with ample space for families. Set over three floors, this home boasts two generous reception rooms, providing plenty of room for relaxation and entertainment. The well designed layout allows for an abundance of natural light, enhancing the warm and inviting atmosphere throughout. Each of the five bedrooms offers comfortable living space, making this home perfect for growing families or those needing extra room for guests. Located in a desirable area, this home offers excellent amenities and transport links, ensuring a perfect balance of tranquillity and accessibility. Don't miss your chance to own this beautiful family home schedule a viewing today!

## Outside

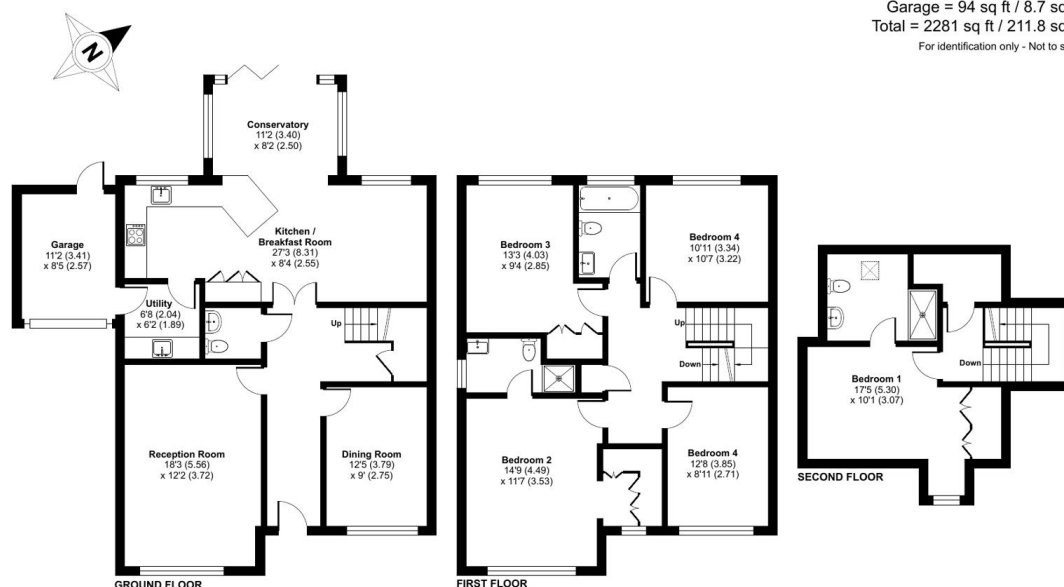
Step outside to enjoy the well maintained front and rear gardens, ideal for outdoor activities or peaceful evenings. This property also features convenient access to Swan Lake, perfect for leisurely walks and nature enthusiasts.

To view the Material Information Certificate for this property please click [Here](#) or contact us to request a copy.

## Floorplan

### Curlew Grove, Blackwater, Camberley, GU17

Approximate Area = 2187 sq ft / 203.1 sq m  
Garage = 94 sq ft / 8.7 sq m  
Total = 2281 sq ft / 211.8 sq m  
For identification only - Not to scale



Floor plan produced in accordance with RICS Property Measurement 2nd Edition, incorporating International Property Measurement Standards (IPMS2 Residential). © nrichcom 2025. Produced for Bridges Estate Agents. REF: 1300472

**Bridges**  
Estate Agents

**Bridges**

TO ARRANGE A VIEWING PLEASE CONTACT:

Tel: **01276 685544** or Email:

**camberley@bridges.co.uk**



Important Notice - These particulars are set out as a general outline only for the guidance of intended purchasers/tenants and do not form part of any offer or contract and must not be relied upon as statements or representations of fact. Purchasers/Tenants must satisfy themselves by inspection or otherwise as to their correctness.