



MILDMAY COURT | ODIHAM


**Platinum
Homes**
BY BRIDGES



The Property

Mildmay Court is located in the centre of the sought after village of Odiham in Hampshire. This well presented five bedroom house has been significantly updated in recent years to offer flexible accommodation.

The ground floor has been altered to offer open plan living with a modern kitchen/dining/living room, downstairs cloakroom, and bi-fold doors to the private patio and garden.

On the first floor are four bedrooms with the second bedroom benefitting from an en suite bathroom. In addition to a family bathroom, the two other double rooms have access to a patio and balcony over the walkway.

The top floor is exclusively for the principal bedroom which is bright and spacious, boasting its own en suite bathroom as well as a substantial amount of space for wardrobes.



Outside

To the rear of the property is a private and enclosed garden which is mostly laid to lawn with a patio area. At the bottom of the garden is a gate that provides access to Archery Fields.

Mildmay Court is an exclusive development, and the property comes with an allocated parking space as well as single garage. Whilst accessed from Archery Fields, there is a charming, short walk to excellent local schools, The Bury and Odiham High Street.



Features

- Five Bedrooms
- Open Plan Kitchen/Dining Room
- Three Bathrooms
- Recently Updated
- Private Garden
- Private Parking and Garage
- Village Centre Location
- EPC: TBC
- Council Tax Band: F

Contact

Philip Gascoyne

pgascoyne@platinumbybridges.co.uk

01252 975501


**Platinum
Homes**
BY BRIDGES





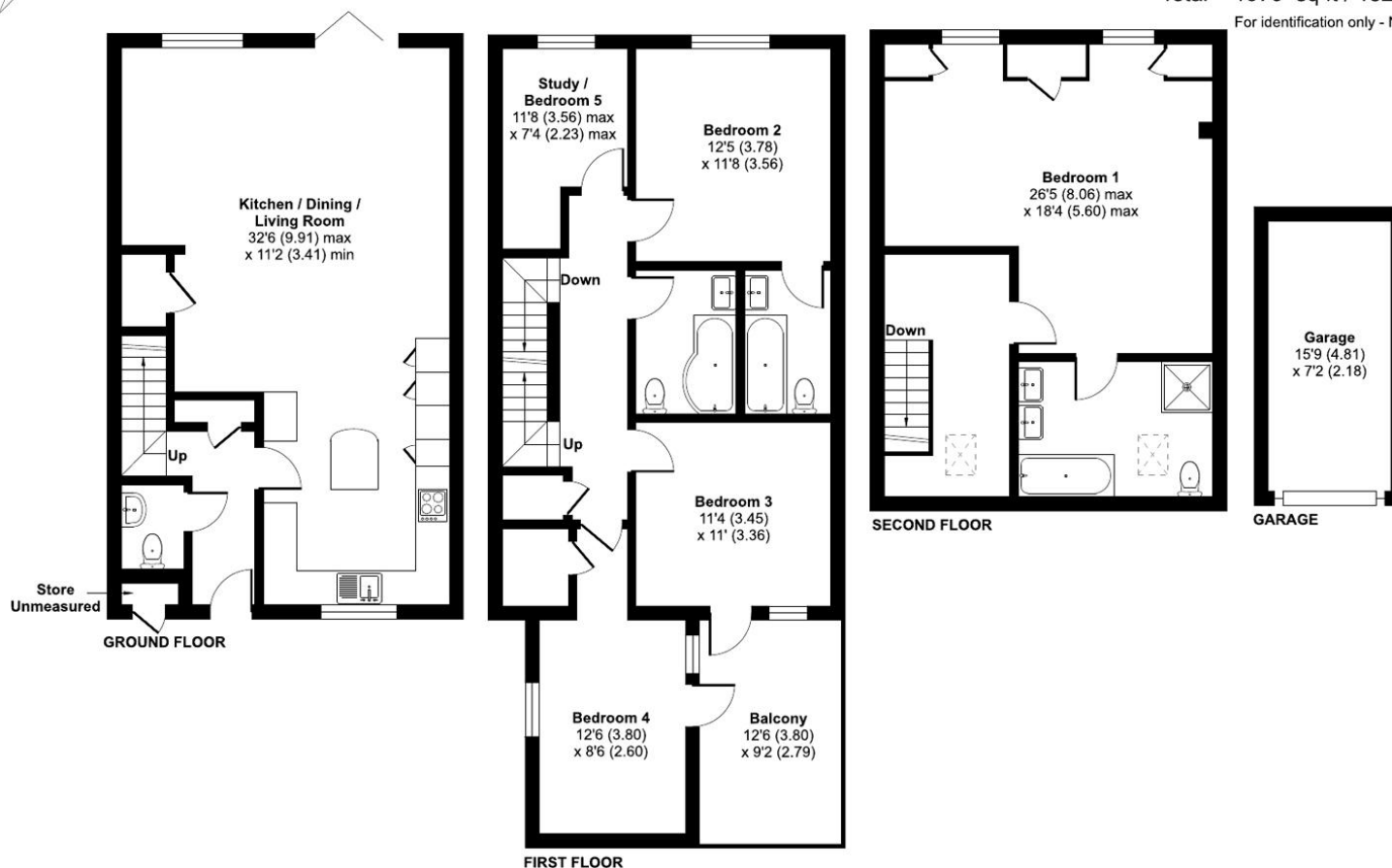
Mildmay Court, Odiham, Hook, RG29

Approximate Area = 1857 sq ft / 172.5 sq m (excludes store)

Garage = 113 sq ft / 10.4 sq m

Total = 1970 sq ft / 182.9 sq m

For identification only - Not to scale



Floor plan produced in accordance with RICS Property Measurement Standards incorporating International Property Measurement Standards (IPMS2 Residential). © nitchecom 2024.
Produced for Bridges Estate Agents Ltd (Platinum Homes). REF: 1088477


**Platinum
Homes**
BY BRIDGES

Important Notice - These particulars are set out as a general outline only for the guidance of intended purchasers and do not form part of any offer or contract and must not be relied upon as statements or representations of fact. Purchasers must satisfy themselves by inspection or otherwise as to their correctness.

