



Two Bedroom Detached Bungalow

Southwood Road, Farnborough, Hampshire, GU14 0JJ

Price: £425,000

- Two Double Bedrooms
- Detached
- Bungalow
- Bay Windows
- Spacious Plot
- Close to Station
- No Onward Chain
- EPC: C (70)



Description

Coming to the market with no onward chain is this quaint two bedroom detached bungalow, just a few moments' walk away from Cove Brook. Surrounded by a white picket fence, this property really gives off 'chocolate box' bungalow style. The footprint consists of two double bedrooms, the principal bedroom completes with bay window, bathing the room in natural light. You have a spacious living room, again with the character bay window, which really opens up the room. The second bedroom has a very handy cloakroom just off the room, and you also have the main family bathroom further down the hall. Finally, you have a galley style kitchen. The garden is good sized, mature and private; an ideal blank canvas for those who enjoy gardening. The property is in close proximity to accessing the M3, A331 and major travel links, walking distance to Farnborough Main station and close to Cove Secondary school. Viewings highly recommended.

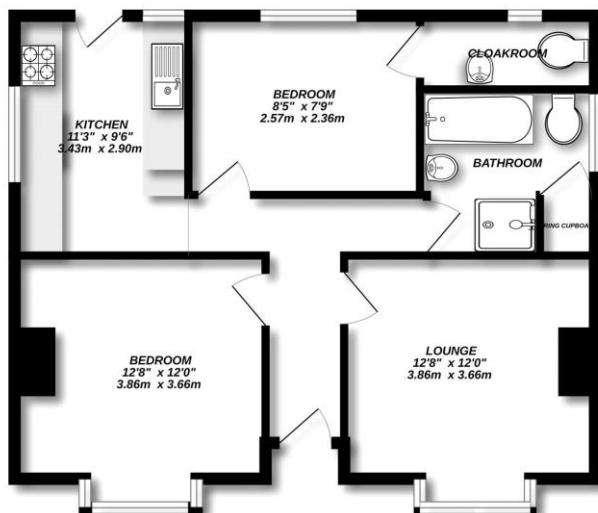
Outside

The garden is spacious, mature and private; an ideal blank canvas for those who enjoy gardening.

To view the Material Information Certificate for this property please click [Here](#) or contact us to request a copy

Floorplan

GROUND FLOOR



Measurements are approximate. Not to scale. Illustrative purposes only. Made with Metreplan 12.025



TO ARRANGE A VIEWING PLEASE CONTACT:
Tel: **01252 361550** or Email: **info@bridges.co.uk**



Important Notice - These particulars are set out as a general outline only for the guidance of intended purchasers/tenants and do not form part of any offer or contract and must not be relied upon as statements or representations of fact. Purchasers/Tenants must satisfy themselves by inspection or otherwise as to their correctness.