



One Bedroom End of Terrace House

South Street, Farnborough, Hampshire, GU14 6LW

Guide Price: £240,000

- One Double Bedroom
- Back to Back House
- Allocated Parking
- Close to Shops
- Access to A331
- Outside Space
- Visitor Parking
- EPC: D (60)



Description

Coming to the market in beautiful condition throughout, this one bedroom back to back house is perfect for first time buyers and investors alike. This house comes with the benefit of allocated parking, as well as ample visitor parking. The property boasts a kitchen, open plan living room and dining area, double bedroom and family bathroom. Being tucked away at the back of the cluster of houses, it has a quiet and relaxing location, ideal for those who enjoy their privacy. The property is within walking distance of North Camp station, local pubs and restaurants, amenities and travel links such as the A331 and M3.

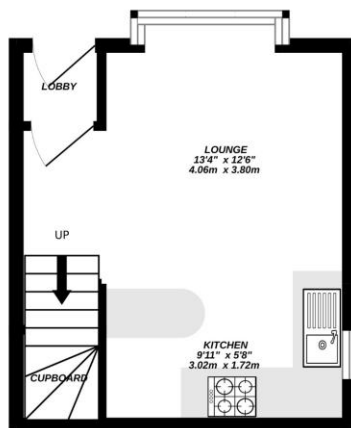
Outside

This property has a lovely, good sized rear garden.

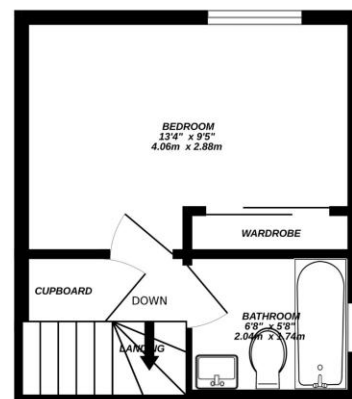
To view the Material Information Certificate for this property please click [Here](#) or contact us to request a copy.

Floorplan

GROUND FLOOR



1ST FLOOR



Measurements are approximate. Not to scale. Illustrative purposes only. Made with Metropix ©2025



TO ARRANGE A VIEWING PLEASE CONTACT:
Tel: **01252 361550** or Email: **info@bridges.co.uk**



Important Notice - These particulars are set out as a general outline only for the guidance of intended purchasers/tenants and do not form part of any offer or contract and must not be relied upon as statements or representations of fact. Purchasers/Tenants must satisfy themselves by inspection or otherwise as to their correctness.