



Two Bedroom Apartment

Upper Charles Street, Camberley, Surrey, GU15 3BE

Guide Price: £230,000

- Two Bedrooms
- Top Floor Apartment
- Part Vaulted Ceilings
- Balcony
- Lift Access
- Camberley Town Centre
- Gated Covered Parking
- EPC: C (75)



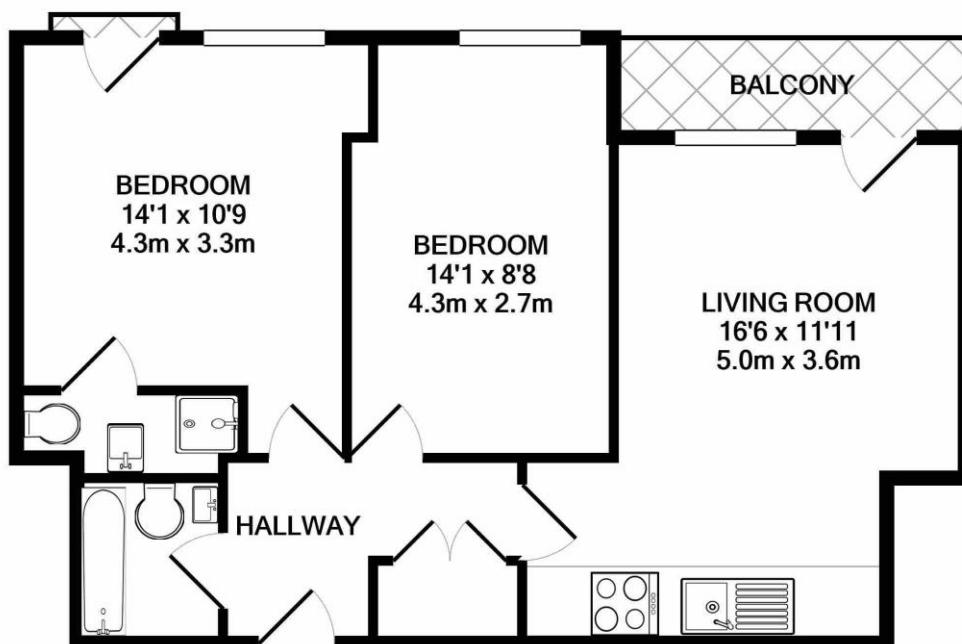
Description

A fantastic top floor two bedroom apartment, situated in this popular gated development in central Camberley, with the benefit of a covered parking space, lift access, part vaulted ceilings and balcony accessed via the living room offered for sale with no onward chain. The accommodation comprises an open plan lounge/dining room area, a kitchen with granite worktops and double doors accessing a balcony, two double bedrooms, with an en suite to the principal room, a bathroom, plus a utility cupboard. Featuring oiled oak flooring to the hall and living/kitchen area, plus views over the park.

Outside

The car park is approached via electronically operated gates, plus this apartment enjoys an allocated covered parking space. There is a communal deck area on the second floor.

Floorplan



TO ARRANGE A VIEWING PLEASE CONTACT:

Tel: 01276 685544 or Email:

camberley@bridges.co.uk



Important Notice - These particulars are set out as a general outline only for the guidance of intended purchasers/tenants and do not form part of any offer or contract and must not be relied upon as statements or representations of fact. Purchasers/Tenants must satisfy themselves by inspection or otherwise as to their correctness.