



Four Bedroom Detached House

Hazel Avenue, Farnborough, Hampshire, GU14 0DW

Guide Price: £675,000

- Four Double Bedrooms
- Detached Bungalow
- Backing Onto Nature Reserve
- Good Size Kitchen/Breakfast Room
- Lounge with Open Fireplace
- Well Sized Rear Garden
- No Through Road Private Location
- EPC: D (62)



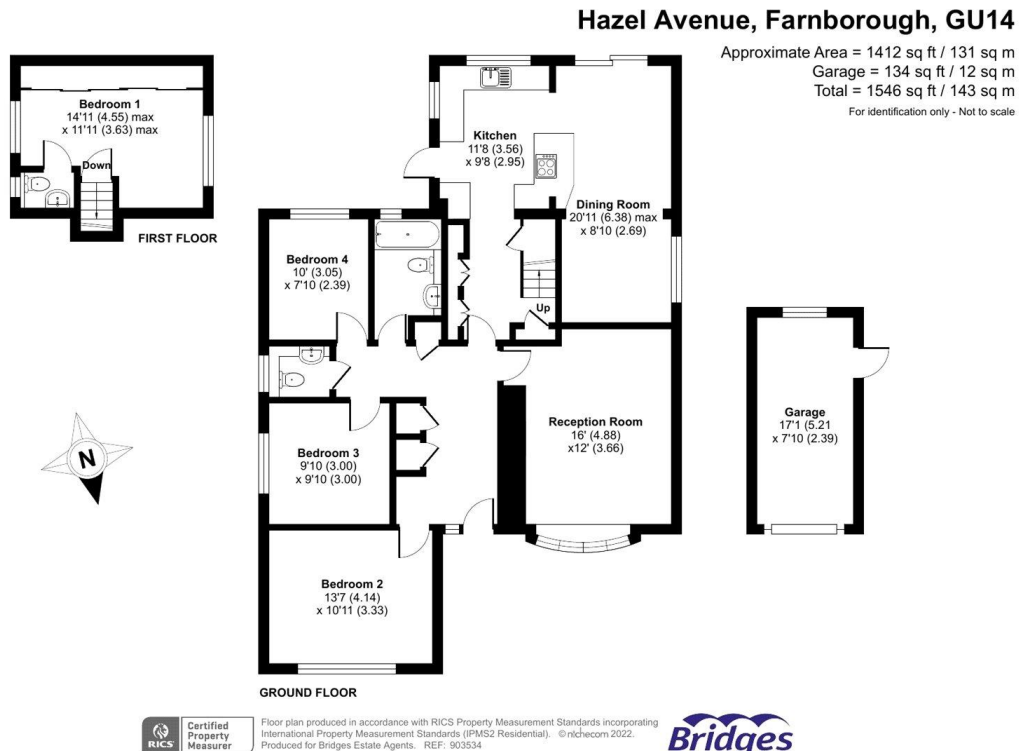
Description

Offered for sale in immaculate condition is this four bedroom detached chalet bungalow with a larger than average garden which backs onto Southwood Nature Reserve and situated on a no through road in a very private location. The property offers four double bedrooms, downstairs bathroom and further a separate cloakroom. Bedroom one is upstairs with dual-aspect windows and an en suite toilet. To the ground floor there are a further three double bedrooms, lounge with a log burner, bright and airy white fitted kitchen with ample storage and breakfast bar area leading to separate seating area and dining room. The garden is fully enclosed and laid to lawn with a patio area and access to sheds and the garage. The garden also has several fruit trees and is very private. To the front of the property is ample driveway parking and the rest laid to lawn with path leading to front door with shrub and flower borders. Viewings are highly recommended on this beautiful home.

Outside

Externally, there is a larger than average fully enclosed rear garden which is laid to lawn with a patio area and several fruit trees. There is side access and a door leading to the garage and sheds. To the front there is ample driveway parking leading to the garage.

Floorplan



TO ARRANGE A VIEWING PLEASE CONTACT:
Tel: **01252 361550** or Email: **info@bridges.co.uk**



Important Notice - These particulars are set out as a general outline only for the guidance of intended purchasers/tenants and do not form part of any offer or contract and must not be relied upon as statements or representations of fact. Purchasers/Tenants must satisfy themselves by inspection or otherwise as to their correctness.