

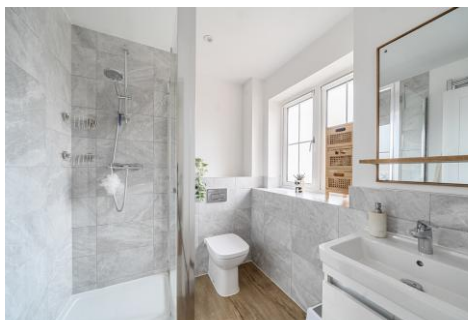


Four Bedroom Detached House

Armsworth Way, Farnham, Surrey, GU9 0FJ

Price: £775,000

- Four Double Bedrooms
- Detached
- Contemporary Living
- Generous Garden for Modern Property
- Driveway/Garage
- Kitchen/Breakfast Room
- Two En Suite Shower Rooms
- EPC: B (84)



Description

An outstanding four bedroom detached family home situated in a peaceful development, a short distance from highly regarded schools and Farnham's charming town centre. Once through the front door you are greeted by a welcoming hallway which provides access to a front aspect living room with attractive bay window, wood burner and feature wall. Towards the rear is a stunning kitchen/breakfast room, an ideal space for entertaining with patio doors leading out to the garden. The kitchen offers a wide range of cupboards along with integrated appliances. Additionally, there is a downstairs cloakroom. On the first floor, there are three well proportioned bedrooms, one of which has an en suite shower room. One of the bedrooms benefits from fitted wardrobes. There is a modern family bathroom that makes up the rest of the first floor. The current owners have converted the loft into a grand principal bedroom with its own luxurious en suite shower room, storage space and two Velux windows allowing for plenty of natural light.

Outside

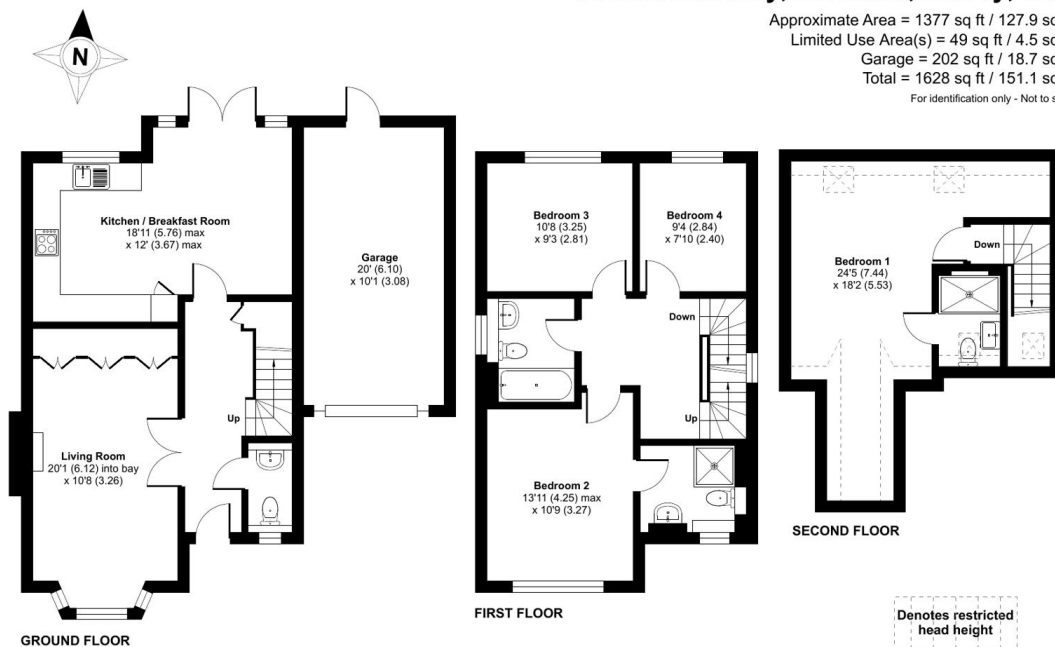
Externally you have parking for several vehicles and an attached garage to the front. The rear garden is mostly laid to lawn, is reasonably secluded and has patio perfect for entertaining guests.

To view the Material Information Certificate for this property please click [Here](#) or contact us to request a copy.

Floorplan

Armsworth Way, Farnham, Surrey, GU9

Approximate Area = 1377 sq ft / 127.9 sq m
 Limited Use Area(s) = 49 sq ft / 4.5 sq m
 Garage = 202 sq ft / 18.7 sq m
 Total = 1628 sq ft / 151.1 sq m
 For identification only - Not to scale



Floor plan produced in accordance with RICS Property Measurement 2nd Edition, incorporating International Property Measurement Standards (IPMS2 Residential). © nrichcom 2025. Produced for Bridges Estate Agents. REF: 1302093

Bridges
 .CO.UK

Bridges

TO ARRANGE A VIEWING PLEASE CONTACT:
 Tel: 01252 361550 or Email: info@bridges.co.uk



Important Notice - These particulars are set out as a general outline only for the guidance of intended purchasers/tenants and do not form part of any offer or contract and must not be relied upon as statements or representations of fact. Purchasers/Tenants must satisfy themselves by inspection or otherwise as to their correctness.