

One Bedroom End of Terrace House

Chiltern Avenue, Farnborough, Hampshire, GU14 9TF

Price: £250,000

- One Bedroom
- Popular Established Development
- Modern Refitted Kitchen
- Modern Refitted Bathroom
- Well Presented Throughout
- Resident Parking
- Ideal Investment/First Buy
- EPC: E (45)



Description

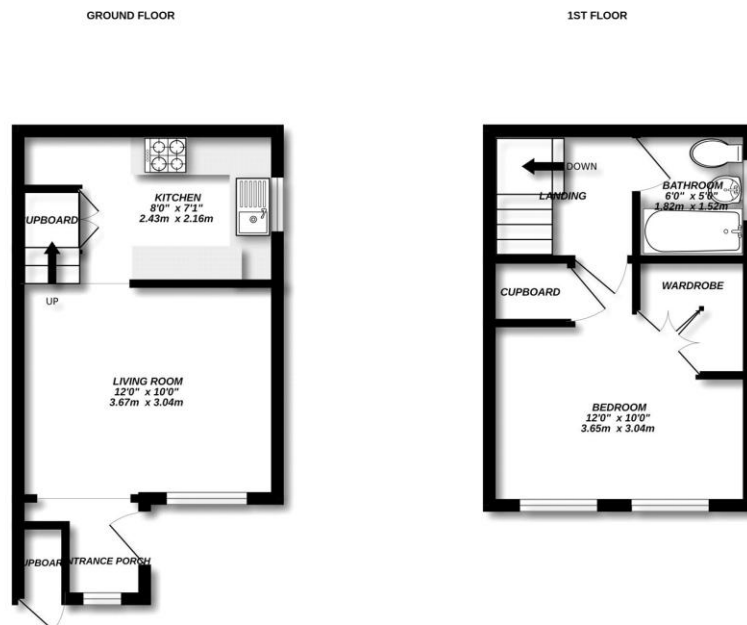
****Open House 21st of June between 11am and 1pm by Appointment only**** Tucked away within a small popular established development, is this updated and well presented one bedroom back to back house. Positioned on the fringes of Farnborough and with easy access to Fleet and Junction 4a of the M3, the property offers a modern refitted kitchen, 12 foot living room, modern refitted bathroom, 12 foot bedroom, resident parking, front garden and an area to side. IDEAL INVESTMENT / FIRST TIME BUY.

Outside

The property features a low maintenance front garden and residential parking.

To view the Material Information Certificate for this property please click [Here](#) or contact us to request a copy

Floorplan



Measurements are approximate. Not to scale. Illustrative purposes only.
Made with Metrage 12/2025



TO ARRANGE A VIEWING PLEASE CONTACT:
Tel: **01252 361550** or Email: **info@bridges.co.uk**



Important Notice - These particulars are set out as a general outline only for the guidance of intended purchasers/tenants and do not form part of any offer or contract and must not be relied upon as statements or representations of fact. Purchasers/Tenants must satisfy themselves by inspection or otherwise as to their correctness.