



Three Bedroom Semi-Detached House

Wright Avenue, Blackwater, Camberley, Hampshire, GU17 9FL

Guide Price: £450,000

- Three Bedrooms
- Popular Helios Park Development
- Kitchen/Diner
- En Suite and Family Bathroom
- Driveway and Garage
- Modern Finish
- Recently Constructed
- EPC: B (84)



Description

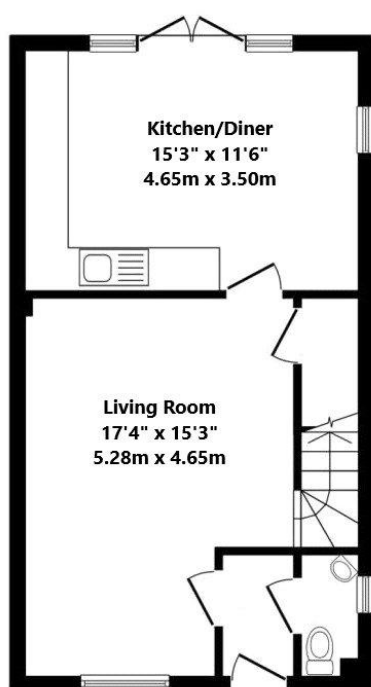
Situated on the popular Helios Park Development and within easy access of the M3, a stunning three-bedroom family home. Having been recently constructed and with the current vendor added some superb additions such as additional understairs storage and panelling, this is an ideal home and ready to move into! The ground floor comprises of an entrance hall with cloakroom, spacious living room leading to the kitchen/diner to the rear with French doors to the garden, perfect for BBQ's! Upstairs are three bedrooms, two of which are served by the family bathroom with bedroom one benefitting from an en suite and built-in wardrobes! The property is located within easy reach of schooling, Hawley Woods including Hawley Lake, Fleet town centre and major road networks like the M3, A331, A327 and A30.

Outside

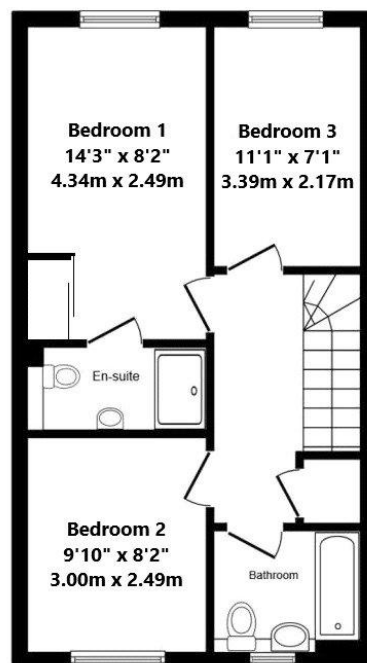
To the front of the property there is a well-maintained garden with pathway to the front door, to the side there is driveway parking for multiple vehicles and a single garage and side access to the well-maintained rear garden with delightful patio, lovely lawn and bonus seating area behind the garage!

To view the Material Information Certificate for this property please click [Here](#) or contact us to request a copy.

Floorplan



Ground Floor



First Floor



TO ARRANGE A VIEWING PLEASE CONTACT:

Tel: 01276 685544 or Email:

camberley@bridges.co.uk



Important Notice - These particulars are set out as a general outline only for the guidance of intended purchasers/tenants and do not form part of any offer or contract and must not be relied upon as statements or representations of fact. Purchasers/Tenants must satisfy themselves by inspection or otherwise as to their correctness.