



Two Bedroom Semi-Detached House

Ridges Rise, Deepcut, Camberley, Surrey, GU16 6FT

Price: £425,000

- Two Double Bedrooms
- Two Bathrooms
- En Suite Shower Room
- Immaculately Presented
- Bigger than Average Plot
- Driveway for Multiple Vehicles
- Close to Canal Walks and Local Amenities
- EPC: B (85)



Description

An immaculately presented two double bedroom semi-detached home, situated within the highly desirable Mindenhurst development in Deepcut. Built by Cala Homes in 2020, this property is a must see and enjoys a bigger than average plot for the development. Ground floor accommodation includes a bright living room with patio doors leading to the garden, a modern kitchen with integral appliances and composite worksurfaces, and a downstairs cloakroom. A bespoke storage unit has been fitted under the stairs, providing space for shoes. The first floor offers two double bedrooms and two bathrooms. The principal bedroom benefits from fitted wardrobes and an en suite shower room.

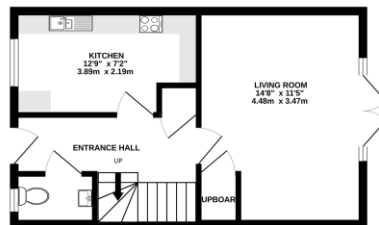
Outside

The property overlooks a communal green to the front and has a small lawned front garden. There is driveway parking for multiple vehicles and the rear garden is bigger than average for the development. It has an extended patio leading to the lawn. There is also a side access gate.

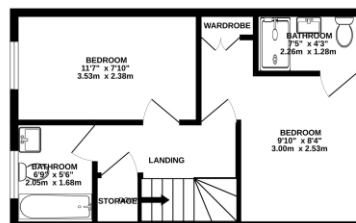
To view the Material Information Certificate for this property please click [Here](#) or contact us to request a copy.

Floorplan

GROUND FLOOR



1ST FLOOR



Whilst every attempt has been made to ensure the accuracy of the floorplan contained here, measurements of doors, windows, rooms and any other parts are approximate and no responsibility is taken for any error, omission or mis-statement. This plan is for illustrative purposes only and should be used as a guide only. Prospective purchasers should verify the accuracy of the floorplan by inspection or otherwise as to their correctness. No guarantee as to the accuracy or efficiency can be given. Made with Metaplan CC000



TO ARRANGE A VIEWING PLEASE CONTACT:
Tel: **01252 361550** or Email: **info@bridges.co.uk**



Important Notice - These particulars are set out as a general outline only for the guidance of intended purchasers/tenants and do not form part of any offer or contract and must not be relied upon as statements or representations of fact. Purchasers/Tenants must satisfy themselves by inspection or otherwise as to their correctness.