

Two Bedroom End of Terrace House

Lingwood, Bracknell, Berkshire, RG12 7PZ

Price: £320,000

- Two Double Bedroom End Terrace
- Popular Established Development
- In Need of Refurbishment
- Garage and Driveway Parking
- Enclosed Rear Garden
- Living/Dining Room with Vaulted Ceiling
- No Onward Chain
- EPC: F (36)



Description

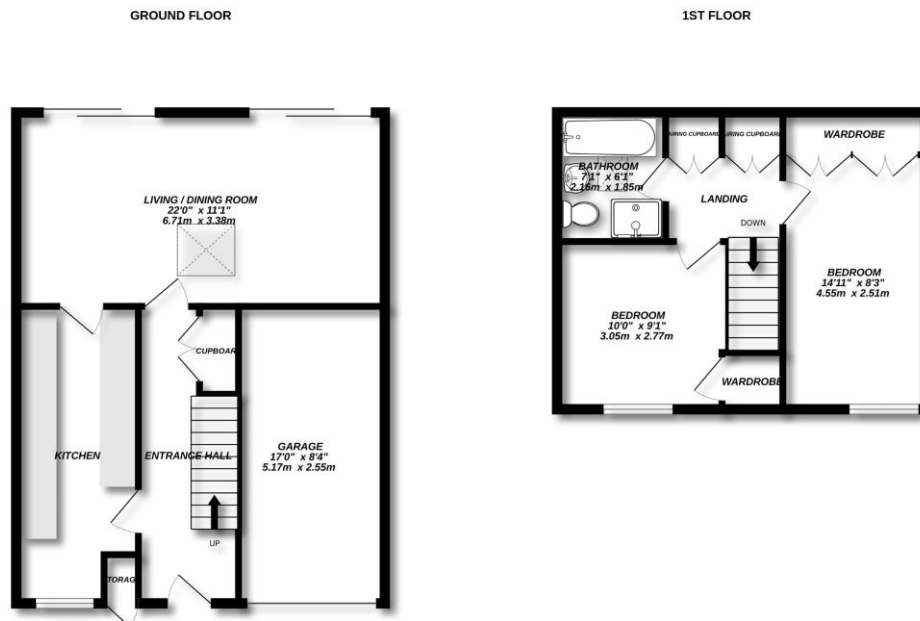
Tucked away within a popular established development is this two double bedroom end terrace home. Ideally positioned for easy access to local schools, amenities and travel links, the property is in need of refurbishment and offers a 22 foot living/dining room with vaulted ceiling, 17 foot wood fitted kitchen, electric heating, double glazing, enclosed garden, integral garage and driveway parking.

IDEAL PROJECT/ FIRST BUY, NO ONWARD CHAIN

Outside

The property features an enclosed rear garden mainly laid to lawn surrounded by wood panel fencing.

Floorplan



Made with Metropix ©2025



TO ARRANGE A VIEWING PLEASE CONTACT:

Tel: **01344 962150** or Email:



Important Notice - These particulars are set out as a general outline only for the guidance of intended purchasers/tenants and do not form part of any offer or contract and must not be relied upon as statements or representations of fact. Purchasers/Tenants must satisfy themselves by inspection or otherwise as to their correctness.