

Two Bedroom Apartment

Carter Court, Hook, Hampshire, RG27 9AD

Offers Over: £250,000

- Two Double Bedrooms
- First Floor Apartment
- En Suite to Main Bedroom
- Close to Amenities
- Close to Mainline Station
- Long Lease
- Allocated Parking
- EPC: B (83)



Description

Stylish, light filled and designed for modern living, this upper ground floor apartment immediately feels like home. The standout feature is a generous bay window that floods the open plan living space with natural light, creating a warm and inviting atmosphere, perfect for everything from relaxed evenings to hosting friends. The sleek kitchen blends seamlessly into the space, complete with glossy cabinets and integrated appliances, while still allowing for a distinct dining area. Both bedrooms are well proportioned, with the main bedroom offering fitted wardrobes and a private en suite finished to a contemporary standard. A chic main bathroom, useful hallway storage, and a well-planned layout add to the apartment's practical appeal.

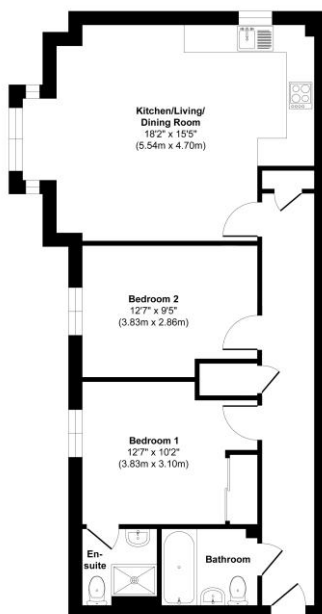
Outside

Tucked away in the sought after Pembroke Manor development, this property enjoys a peaceful yet well connected setting. Built by Taylor Wimpey in 2018, the building is surrounded by smart communal grounds and includes allocated parking. Hook is a thriving village with a welcoming community feel, a mix of independent shops and cafés, and a range of parks and green spaces to enjoy. Whether you're heading into London, Basingstoke or Reading, excellent transport links via the nearby station and M3 make daily commutes or weekend getaways a breeze. It's the ideal place to enjoy the best of village life without compromising on convenience.

To view the Material Information Certificate for this property please click [Here](#) or contact us to request a copy.

Floorplan

Willow House, Carter Court



Whilst every attempt has been made to ensure the accuracy of the floorplan contained herein, measurements of doors, windows, stairs and any other items are approximate and no responsibility is taken for any misrepresentation or misstatement. This plan is for illustrative purposes only and should be used as such by any prospective purchaser. The layout, fixtures and appliances shown have not been tested and no guarantee as to their operability or efficiency can be given. Made with Metropac (2020)



TO ARRANGE A VIEWING PLEASE CONTACT:
Tel: **01256 769999** or Email: **info@bridges.co.uk**



Important Notice - These particulars are set out as a general outline only for the guidance of intended purchasers/tenants and do not form part of any offer or contract and must not be relied upon as statements or representations of fact. Purchasers/Tenants must satisfy themselves by inspection or otherwise as to their correctness.