



One Bedroom Terraced Maisonette

Aldworth Close, Bracknell, Berkshire, RG12 7AW

Price: £225,000

- One Double Bedroom
- Sleek Ground Floor Maisonette
- Close to Bracknell Town Centre
- Rear Aspect Living Room
- Modern Kitchen and Bathroom
- Allocated Parking
- Cul-de-Sac Location
- EPC: C (74)



Description

This beautifully presented ground floor maisonette offers the perfect blend of modern living and convenience, situated close to the vibrant Bracknell town centre. Ideal for first time buyers, downsizers, or investors, the property features a contemporary interior with stylish finishes throughout. The accommodation comprises a spacious living, a sleek kitchen a generously sized double bedroom, and a modern three piece bathroom. Good sized windows throughout to allow for plenty of natural light, creating a bright and welcoming atmosphere. Outside, the property benefits from allocated parking and well maintained communal gardens. With excellent transport links nearby, including Bracknell station and easy access to the M3 and M4 motorways, commuting is simple and efficient.

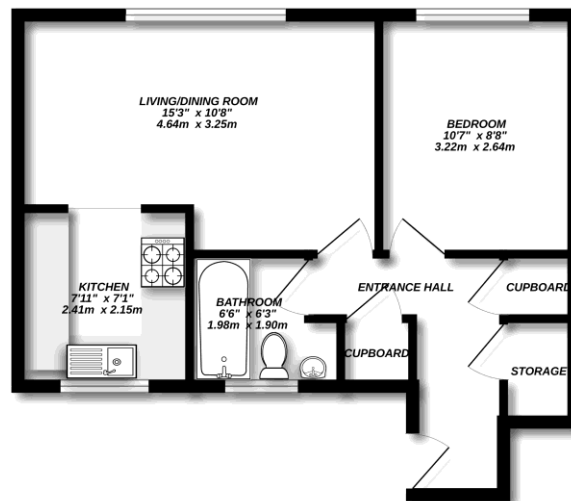
Outside

There are communal grounds to the rear of the property that are mostly laid to lawn.

To view the Material Information Certificate for this property please click [Here](#) or contact us to request a copy.

Floorplan

GROUND FLOOR



Made with Metropix 02025



TO ARRANGE A VIEWING PLEASE CONTACT:

Tel: **01344 962150** or Email:



Important Notice - These particulars are set out as a general outline only for the guidance of intended purchasers/tenants and do not form part of any offer or contract and must not be relied upon as statements or representations of fact. Purchasers/Tenants must satisfy themselves by inspection or otherwise as to their correctness.