



One Bedroom Ground Floor Apartment Broadhurst, Farnborough, Hampshire, GU14 9XA

Asking Price: £170,000

- One Double Bedroom
- Over 900 Year Lease
- Parking
- Study Corner
- Close to Shops
- Good M3 Access
- Estimate Rental Price: £1,000 pcm
- EPC: C (75)



Description

Tucked away in a quiet location, in the heart of the Barningley Park development, stands this one double bedroom share of freehold property. Being ground floor, this property would suit someone who needs everything on one level. The property is tastefully decorated with a deep emerald, green feature wall, and floral study space corner. The kitchen is modern and offers plenty of worktop space, and the open plan feel is great for socializing! The bedroom is a fantastically sized double, that has plenty of room for free standing wardrobe space. The bathroom, which is just off from the bedroom, has bath with a built-in shower. There are gorgeous and well kept communal gardens as well as ample communal parking. You are a short walk away from Hawley Woods/Lake, as well as local shops and amenities, and this property has good access to the M3.

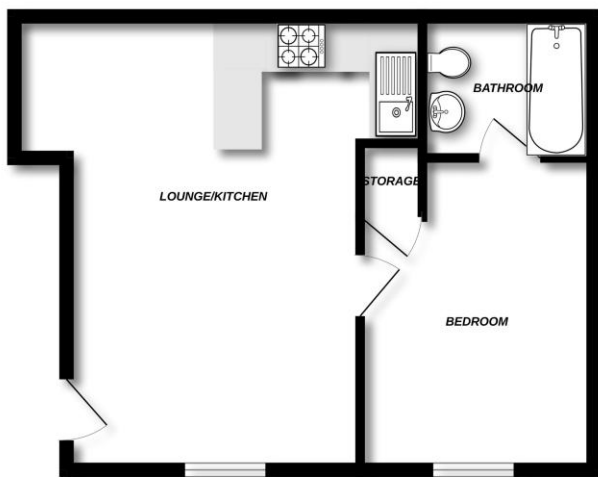
Outside

There are gorgeous and well kept communal gardens as well as ample communal parking.

To view the Material Information Certificate for this property please click [Here](#) or contact us to request a copy.

Floorplan

GROUND FLOOR



Made with Metropix 0325



TO ARRANGE A VIEWING PLEASE CONTACT:
Tel: **01252 361550** or Email: **info@bridges.co.uk**



Important Notice - These particulars are set out as a general outline only for the guidance of intended purchasers/tenants and do not form part of any offer or contract and must not be relied upon as statements or representations of fact. Purchasers/Tenants must satisfy themselves by inspection or otherwise as to their correctness.