



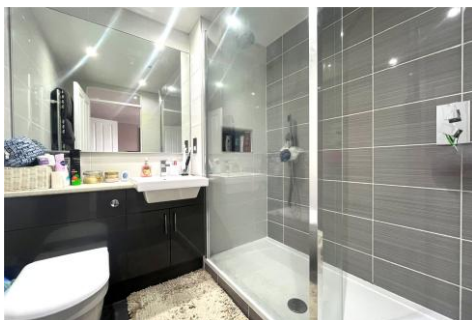
## Three Bedroom Terraced House

### Ash Lodge Drive, Ash, Surrey, GU12 6LP

Price: £450,000

- Three Great Sized Bedrooms
- Driveway Parking for Multiple Vehicles
- Refitted En Suite
- Downstairs Cloakroom
- Garage in a Block
- Close to Local Schools and Amenities
- Quiet Residential Location
- EPC: C (73)





## Description

This deceptively spacious three bedroom family home is situated in a perfect location for local schools, amenities and transport links. It offers driveway parking for multiple vehicles to the front, plus an enclosed rear garden and garage in block. As you enter the property, you are greeted with a handy porch and a spacious hallway with kitchen to the left - as well as a dining/reception room to the right hand side. There is a downstairs cloakroom before opening out to the brilliant living room, which offers plenty of natural light and double doors out to the private garden. Upstairs, there are three great sized bedrooms and a family bathroom, along with a refitted en suite shower room and plenty of in built wardrobe space. The current owners have also updated all windows and doors, as well as replacing the boiler two years ago. This property must be seen to fully appreciate the space it offers, so please contact us to arrange your appointment!

## Outside

Externally, there is a driveway to the front, a garage to the rear plus a garden with patio area and rear access.

To view the Material Information Certificate for this property please click [Here](#) or contact us to request a copy.

## Floorplan



TO ARRANGE A VIEWING PLEASE CONTACT:  
Tel: **01252 361550** or Email: **info@bridges.co.uk**



Important Notice - These particulars are set out as a general outline only for the guidance of intended purchasers/tenants and do not form part of any offer or contract and must not be relied upon as statements or representations of fact. Purchasers/Tenants must satisfy themselves by inspection or otherwise as to their correctness.