



## One Double Bedroom Apartment

**London Road, Camberley, Surrey, GU15 3EY**

**Guide Price: £180,000**

- One Double Bedroom
- First Floor Executive Apartment
- High Specification
- Lift Access
- Camberley Town Centre
- No Onward Chain
- Estimated Rental Price: £1,100 pcm
- EPC: C (73)



## Description

A well presented one double bedroom executive apartment located in the heart of Camberley town centre and offered to the market with no onward chain. The accommodation comprises a spacious entrance hall, open plan living room/fitted kitchen, bedroom and a bathroom. The property was recently constructed and refurbished to a high specification. An internal inspection is highly recommended to truly appreciate this apartment.

## Outside

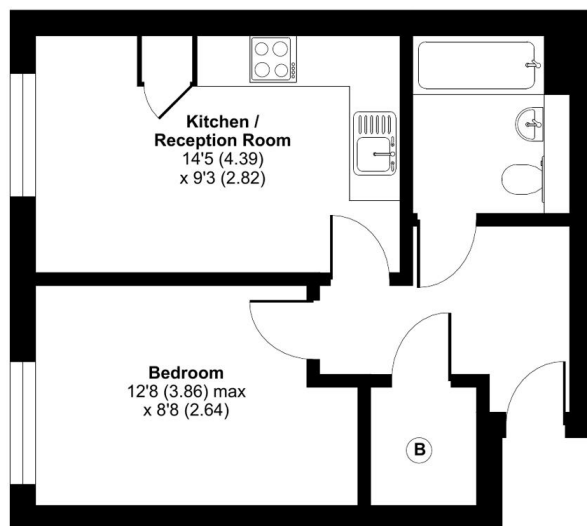
The property also benefits from a communal bike and bin store.

To view the Material Information Certificate for this property please click [Here](#) or contact us to request a copy.

## Floorplan

### Compass House, London, Camberley, GU15

Approximate Area = 375 sq ft / 34.8 sq m  
For identification only - Not to scale



SECOND FLOOR

Floor plan produced in accordance with RICS Property Measurement 2nd Edition, incorporating International Property Measurement Standards (IPMS2 Residential). © nldhcom 2025. Produced for Bridges Estate Agents. REF: 1303730



TO ARRANGE A VIEWING PLEASE CONTACT:

Tel: **01276 685544** or Email:  
**camberley@bridges.co.uk**



Important Notice - These particulars are set out as a general outline only for the guidance of intended purchasers/tenants and do not form part of any offer or contract and must not be relied upon as statements or representations of fact. Purchasers/Tenants must satisfy themselves by inspection or otherwise as to their correctness.