



Four Bedroom End of Terrace House

Mildmay Court, Odiham, Hook, Hampshire, RG29 1AX

Price: £700,000

- Spacious Four Bedroom Home
- Exclusive Courtyard Setting
- Refitted Modern Kitchen
- Sunlit Southerly Facing Garden
- Garage and Allocated Parking
- Velux Windows with Stunning Views
- Close to Odiham High Street
- EPC: C (69)



Description

Tucked away in the heart of Odiham, this four bedroom family home is a perfect blend of modern style and practicality. Step inside, and you'll find bright, spacious interiors, designed with modern convenience in mind. The recently refitted kitchen, finished to an immaculate standard, flows effortlessly into the dining area, ideal for everything from lazy Sunday breakfasts to lively gatherings. Beyond, the living room is warm and inviting, with a gas fireplace as its centrepiece. The conservatory, bathed in natural light, offers the perfect retreat for a moment of calm.

Upstairs, the first floor boasts three well proportioned bedrooms, one with its own en suite bathroom, while the others share a stylish family bathroom. At the very top, a spacious, private bedroom enjoys its own en suite and Velux windows framing picturesque views, bringing in an abundance of natural light. Thoughtfully equipped with solar panels, the home balances sustainability with everyday comfort.

Outside

Outside, the southerly facing courtyard garden is a scene of understated elegance. Mature flower beds, rich with seasonal colour, line the space, while sculpted topiary hedges and ornamental trees add a structured beauty. Sunlight spills into the space throughout the day, making it a perfect spot for peaceful mornings or lively summer evenings. A discreet rear gate offers easy access, complementing the home's thoughtful design. Beyond the doorstep, Odiham offers a charming village atmosphere with modern conveniences. Its historic high street is lined with independent shops, cosy cafes, and traditional pubs, while scenic countryside walks stretch towards the Deer Park and Basingstoke Canal. Families will appreciate the highly regarded local schools, including Buryfields Infant, Mayhill Junior, and Robert May's School, as well as prestigious independent options such as Lord Wandsworth College, St. Nicholas', St Neots, and Daneshill.

To view the Material Information Certificate for this property please click [Here](#) or contact us to request a copy

Floorplan

Mildmay Court, Odiham, Hook, RG29

Approximate Area = 1851 sq ft / 171.9 sq m (excludes store)

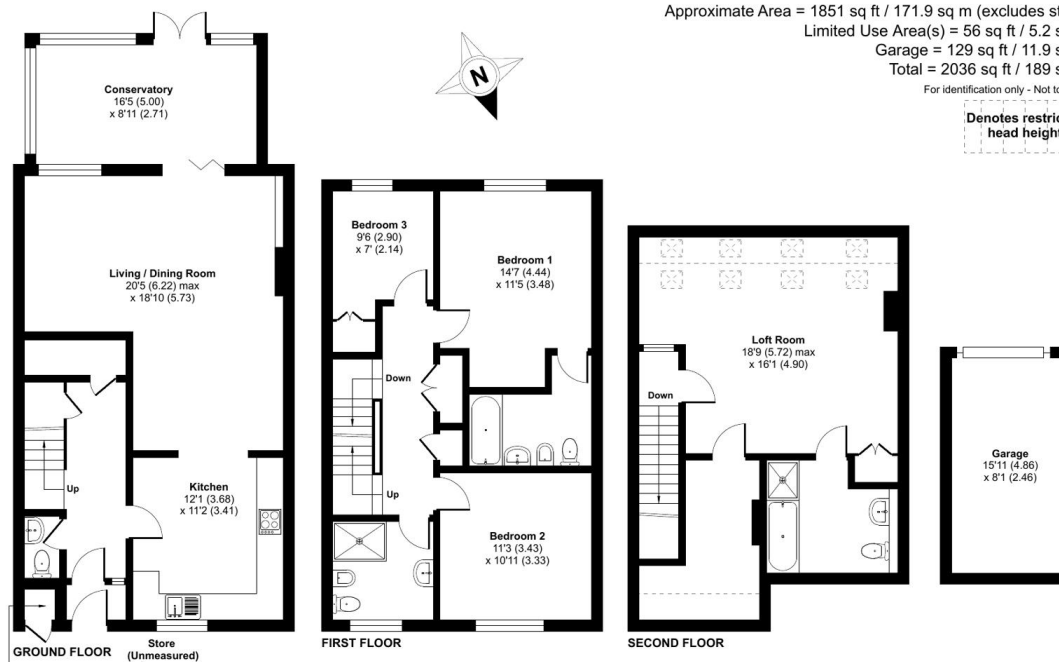
Limited Use Area(s) = 56 sq ft / 5.2 sq m

Garage = 129 sq ft / 11.9 sq m

Total = 2036 sq ft / 189 sq m

For identification only - Not to scale

Denotes restricted head height



Floor plan produced in accordance with RICS Property Measurement 2nd Edition, incorporating International Property Measurement Standards (IPMS2 Residential). © nitchecom 2025. Produced for Bridges Estate Agents. REF: 1310334

Bridges
Estate Agents

Bridges

TO ARRANGE A VIEWING PLEASE CONTACT:
Tel: **01256 769999** or Email: **info@bridges.co.uk**



Important Notice - These particulars are set out as a general outline only for the guidance of intended purchasers/tenants and do not form part of any offer or contract and must not be relied upon as statements or representations of fact. Purchasers/Tenants must satisfy themselves by inspection or otherwise as to their correctness.