



## Two Bedroom Maisonette

**Leishman Views, Wellesley, Aldershot, Hampshire, GU11 4EW**

Price: £595,000

- Two Bedrooms
- Converted Maisonette
- Private Balcony
- Private Garden
- Stunning External Views
- Original Features Throughout
- Two Double Bedrooms with En Suites
- EPC: D (65)





## Description

Originally part of the Aldershot Military Hospital, Bridges are proud to offer to the market this stunning split level two bedroom maisonette. With additional benefits such as its own private garden, a private balcony with wonderful views and original features visible throughout - this property is truly spectacular. The accommodation comprises of a bright and airy entrance hall, which provides access to both double bedrooms. Both bedrooms benefit from an en suite, whilst bedroom one offers an additional dressing room and fitted wardrobes. There is also a separate downstairs cloakroom and an area which can be used a study space. Upstairs offers a vast reception/dining room, with high ceilings creating a homely feel. The kitchen is positioned off this room, as well as doors taking you on to the private balcony. Give us a call today to view this beautiful property.

## Outside

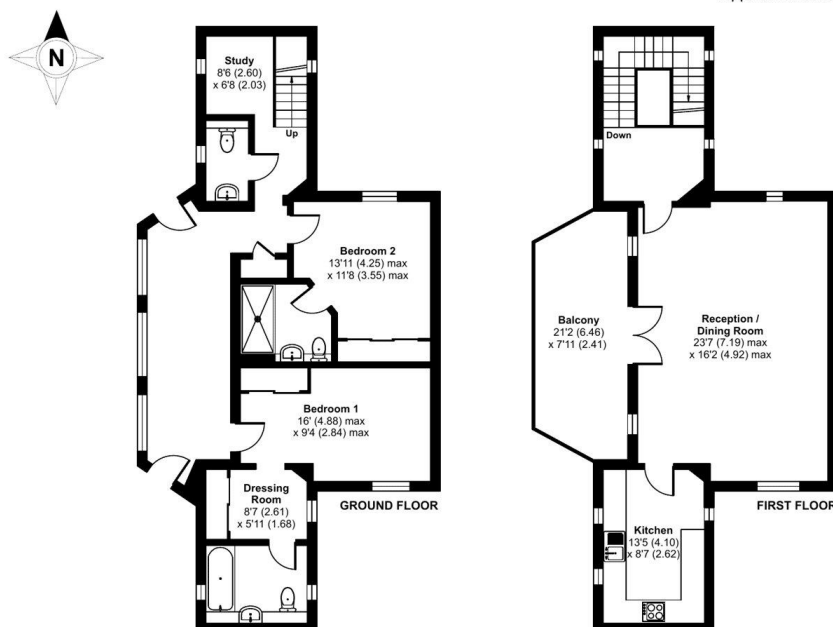
The property benefits from a private south west facing wrap around garden, offering versatile living throughout the year. There is also a private balcony accessed via the reception/dining room, which guarantees spectacular views.

To view the Material Information Certificate for this property please click [Here](#) or contact us to request a copy.

## Floorplan

### Leishman Views, Wellesley, Aldershot, GU11

Approximate Area = 1402 sq ft / 130.2 sq m  
For identification only - Not to scale



Floor plan produced in accordance with RICS Property Measurement 2nd Edition, Incorporating International Property Measurement Standards (IPMS2 Residential). © nidecom 2025. Produced for Bridges Estate Agents. REF: 1310717

**Bridges**  
co.uk

**Bridges**

TO ARRANGE A VIEWING PLEASE CONTACT:  
Tel: **01252 361550** or Email: **info@bridges.co.uk**



Important Notice - These particulars are set out as a general outline only for the guidance of intended purchasers/tenants and do not form part of any offer or contract and must not be relied upon as statements or representations of fact. Purchasers/Tenants must satisfy themselves by inspection or otherwise as to their correctness.