



## Four Bedroom Detached House

**Eddington Road, Bracknell, Berkshire, RG12 8GF**

**Price: £575,000**

- Four Double Bedrooms
- Easthampstead Grange
- Two Reception Rooms
- Kitchen/Breakfast Room
- Utility Room
- Siding onto Park Area
- Cul-de-Sac Location
- EPC: TBC





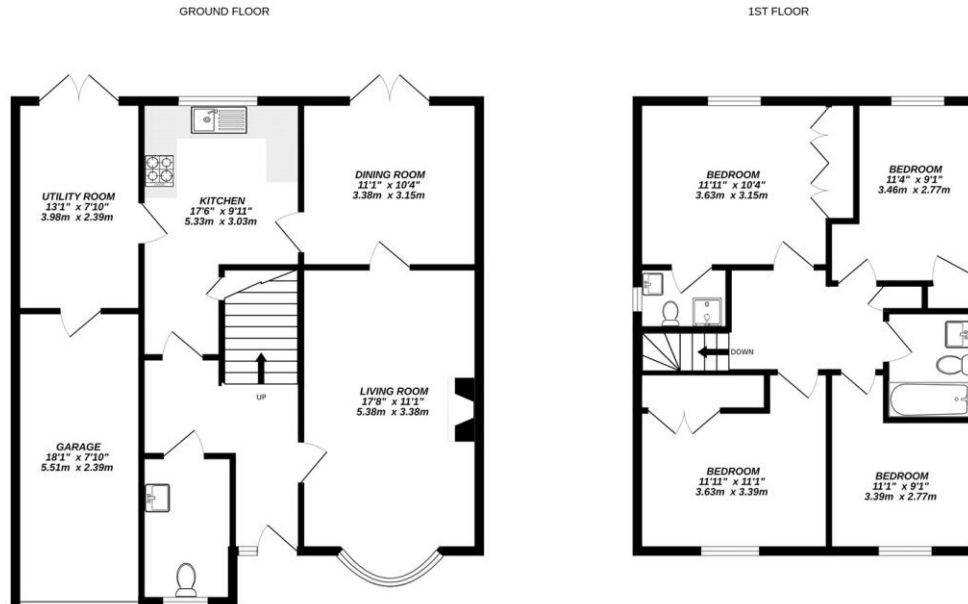
## Description

Located within a cul-de-sac on this popular established development within Easthampstead Grange, is this well presented four bedroom detached family home. Ideally positioned for easy access to local shops and amenities, town centre, local schools, railway station and travel links and siding onto Beedon Park. The property offers a good size living room, dining room, kitchen/breakfast room, utility room and cloakroom to the ground floor. The first floor boasts four double bedrooms, en suite shower room and family bathroom. Externally there is a well tended and secluded rear garden, driveway parking for two vehicles leading to the attached single garage.

## Outside

Well tended rear garden mainly laid to lawn with mature borders, paved patio area and fully enclosed with a private aspect.

## Floorplan



Measurements are approximate. Not to scale. Illustrative purposes only.  
Made with Metropix ©2025



TO ARRANGE A VIEWING PLEASE CONTACT:

Tel: **01344 962150** or Email:



Important Notice - These particulars are set out as a general outline only for the guidance of intended purchasers/tenants and do not form part of any offer or contract and must not be relied upon as statements or representations of fact. Purchasers/Tenants must satisfy themselves by inspection or otherwise as to their correctness.