



One Bedroom Terraced House

Avondale, Ash Vale, Surrey, GU12 5SN

Price: £240,000

- One Double Bedroom
- Garage
- Close to Ash Vale Station
- Residents Parking
- Well Presented
- Recently Installed New Boiler with Warranty until 2033
- No Chain
- EPC: TBC



Description

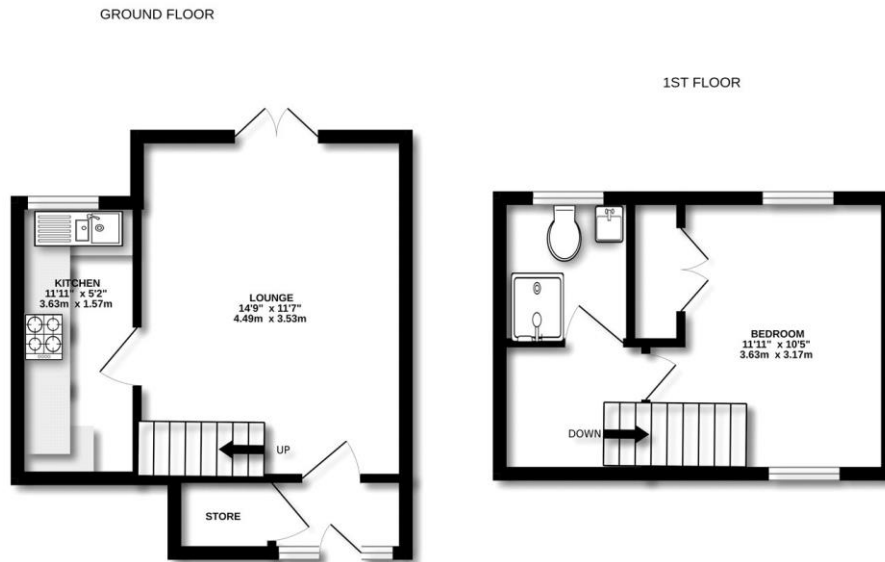
****NO CHAIN**** Located within a short walk of Ash Vale station and the local amenities is this well presented one bedroom freehold house. The property boasts a spacious living room with direct access into communal garden and a kitchen which will include white goods - as well as an entrance porch and storage cupboard. Upstairs benefits from a double bedroom, which includes a built in wardrobe and a refitted shower room. Give us a call today to book your viewing!

Outside

Outside benefits from a garage, residents parking and a communal garden which can be accessed directly from the living room.

To view the Material Information Certificate for this property please click [Here](#) or contact us to request a copy.

Floorplan



Measurements are approximate. Not to scale. Illustrative purposes only
Made with Metropix ©2025



TO ARRANGE A VIEWING PLEASE CONTACT:
Tel: **01252 361550** or Email: **info@bridges.co.uk**



Important Notice - These particulars are set out as a general outline only for the guidance of intended purchasers/tenants and do not form part of any offer or contract and must not be relied upon as statements or representations of fact. Purchasers/Tenants must satisfy themselves by inspection or otherwise as to their correctness.