



Three Bedroom Detached House

Wentworth Close, Ash Vale, Surrey, GU12 5NB

Price: £525,000

- Three Bedroom Detached
- Seven Minute Walk to Ash Vale Station
- Garage
- Ample Parking
- Corner Plot
- Cul-de-Sac Location
- No Onward Chain
- EPC: C (71)



Description

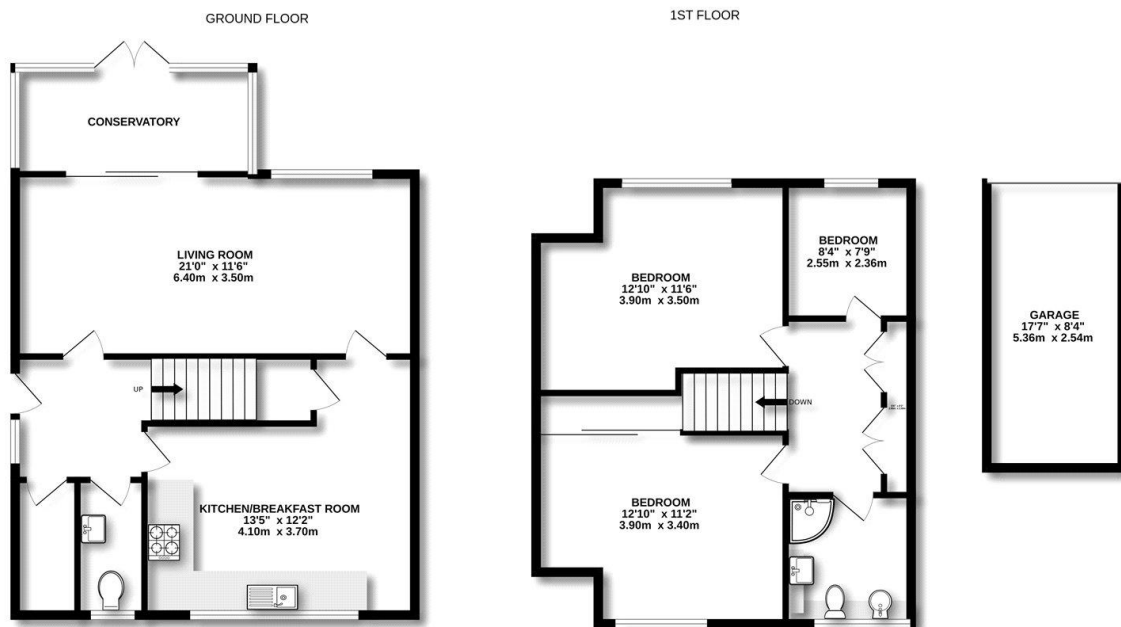
****NO CHAIN**** Located within one of Ash Vale's most prestigious areas of the village, and within a seven minute walk of Ash Vale train station and local amenities, is this well presented three bedroom detached home. The downstairs boasts a spacious kitchen with plenty of cupboard and work top space - as well as a generous size living room. You will also find a conservatory, with pleasant views out into the garden, and a cloakroom. Upstairs benefits from two double bedrooms, a single bedroom and a family bathroom suite. Give us a call today to book your viewing!

Outside

To the front is a long driveway providing plenty of parking leading to a detached garage. There is a large flagstone patio and area of lawn surrounded by deep well stocked beds with pathway - extending to a corner plot and with a further area of garden to the other side of the property.

To view the Material Information Certificate for this property please click [Here](#) or contact us to request a copy.

Floorplan



Measurements are approximate. Not to scale. Illustrative purposes only
Made with Metropix ©2025



TO ARRANGE A VIEWING PLEASE CONTACT:
Tel: **01252 361550** or Email: **info@bridges.co.uk**



Important Notice - These particulars are set out as a general outline only for the guidance of intended purchasers/tenants and do not form part of any offer or contract and must not be relied upon as statements or representations of fact. Purchasers/Tenants must satisfy themselves by inspection or otherwise as to their correctness.