



## Four Bedroom Detached House

**Tamarisk Close, Hatch Warren, Basingstoke, Hampshire, RG22 4UX**

**Price: £535,000**

- Four Bedroom Detached House
- Utility Room to Kitchen
- Downstairs Cloakroom
- En Suite to Principal Bedroom
- Built In Storage in Three Bedrooms
- Integral Garage and Driveway
- Private Rear Garden
- EPC: C (73)



## Description

Sitting in an elevated position in a peaceful cul-de-sac within the popular area of Hatch Warren, this four bedroom home is presented in immaculate condition throughout and has been beautifully cared for by the current owners. With far reaching views at the front of the property, and an incredibly private garden at the rear, you really do get the best of both worlds with this home, and we cannot wait to show you around.

The downstairs layout is ideal for modern family living and flows seamlessly between the separate rooms. The living room with a feature bay window is both generous and cosy, and this adjoins the dining area to keep it an open plan and sociable space. The kitchen overlooks the garden and has a utility room tucked in the corner to keep everything functional and tidy. The integral garage has power and lighting, and benefits from direct access in the entrance hallway giving you the potential for a future conversion project potentially.

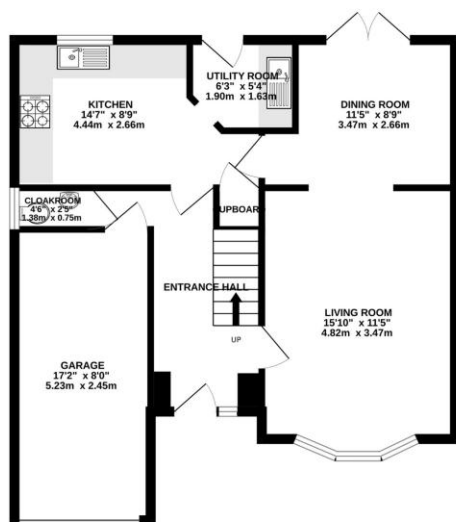
On the first floor there are four generous bedrooms, perfect for any growing family. The main bedroom is an ample double room with built-in wardrobes and a modern en suite shower room. Bedrooms two and three are both double bedrooms, with the fourth being a spacious single bedroom. These are supported perfectly by a modern three piece bathroom.

## Outside

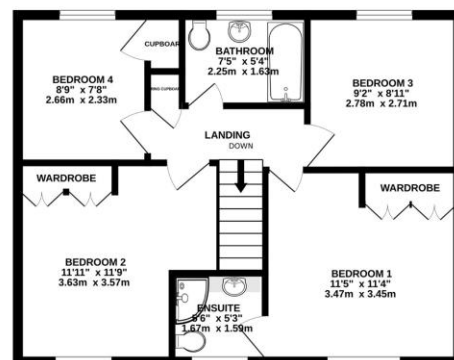
The garden sits over two tiers, with a spacious patio area perfect for outdoor entertaining, and the elevated part of the garden is laid to lawn with beautiful flowers and shrubbery surrounding it. Exceptionally private, this is a great space to unwind, and the peaceful, safe nature of the road itself will appeal to many.

## Floorplan

GROUND FLOOR



1ST FLOOR



Whilst every attempt has been made to ensure the accuracy of the floorplan contained here, measurements of doors, windows, rooms and any other items are approximate and no responsibility is taken for any error, omission or mis-statement. This plan is for illustrative purposes only and should be used as such by any prospective purchaser. The services, systems and appliances shown have not been tested and no guarantee as to their operability or efficiency can be given.  
Made with Metropix ©2024



**TO ARRANGE A VIEWING PLEASE CONTACT:**  
Tel: **01256 880001** or Email: **info@bridges.co.uk**



**Important Notice - These particulars are set out as a general outline only for the guidance of intended purchasers/tenants and do not form part of any offer or contract and must not be relied upon as statements or representations of fact. Purchasers/Tenants must satisfy themselves by inspection or otherwise as to their correctness.**