

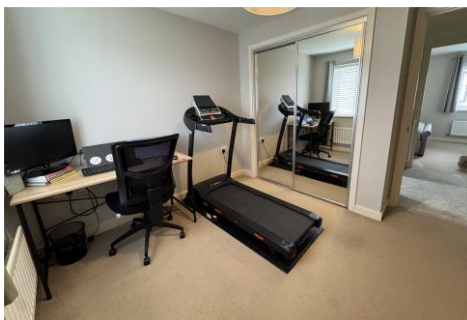


Two Bedroom Semi-Detached House

Avington Way, Sherfield-on-Loddon, Hook, Hampshire, RG27 0AY

Price: £375,000

- Two Bedrooms
- Semi-Detached Home
- Two Bathroom
- Downstairs Cloakroom
- Converted Garage
- Allocated Parking
- Private Enclosed Garden
- EPC: TBC



Description

Situated in the sought after village of Sherfield-on-Loddon, this well presented two bedroom semi-detached home offers a perfect blend of modern comfort and practical living. Built in 2010, the property features two generously sized double bedrooms - with the primary bedroom benefiting from built in wardrobes and a private en suite. A contemporary family bathroom completes the upper floor. The ground floor welcomes you with an entrance hall and convenient cloakroom, leading into a bright and spacious living room. This versatile space is currently used as both a lounge and a home office area, ideal for today's flexible lifestyles. The well appointed kitchen/breakfast room provides ample space for a dining table, making it perfect for both everyday meals and entertaining. Located in a friendly and well connected community, this home is ideal for first time buyers, young families, or professionals alike. Viewings are highly recommended to fully appreciate all this home has to offer.

Outside

The property benefits from allocated parking to the rear - there is also a detached garage to the rear of the property, which has been converted, utilising the front as storage space, ideal for motorbikes, bicycles etc. The back half has been converted with power and light, with a separate door leading to the garden which could be used as an office/workshop. The garden is laid to artificial grass with an area of patio.

To view the Material Information Certificate for this property please click [Here](#) or contact us to request a copy.

Floorplan



TO ARRANGE A VIEWING PLEASE CONTACT:
Tel: 01256 769999 or Email: info@bridges.co.uk



Important Notice - These particulars are set out as a general outline only for the guidance of intended purchasers/tenants and do not form part of any offer or contract and must not be relied upon as statements or representations of fact. Purchasers/Tenants must satisfy themselves by inspection or otherwise as to their correctness.