



Three Bedroom Semi-Detached House Cripsey Road, Farnborough, Hampshire, GU14 9QA

Guide Price: £450,000

- Three Bedrooms
- Corner plot
- Two Bathrooms
- Private Rear Garden
- Driveway Parking
- Two Reception Rooms
- Close to Schools
- EPC: D (58)



Description

If you are looking for a home with a well sized corner plot, backing onto green fields then Cripsey Road is a great property to consider! Coming to the market in fantastic condition throughout is this deceptively spacious three bedroom semi-detached house, complete with ample driveway parking. The downstairs footprint consists of two reception rooms, a downstairs shower room, utility room and kitchen. Upstairs you will find three bedrooms and family bathroom. Further benefits include a new boiler installed within the last 2 years, a garden log cabin (ideal for home working) and the opportunity to extend (STPP).

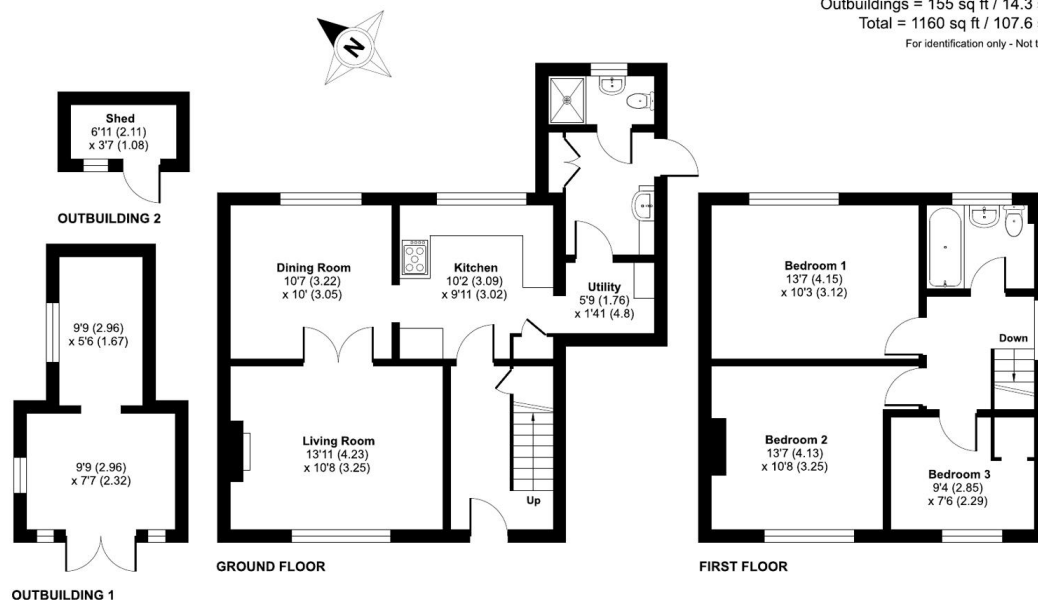
Outside

Sizable corner plot, with a stunning well kept back garden backing onto green fields, perfect for families and entertaining. To view the Material Information Certificate for this property please click [Here](#) or contact us to request a copy.

Floorplan

Cripsey Road, Farnborough, Hampshire, GU14

Approximate Area = 1005 sq ft / 93.3 sq m
Outbuildings = 155 sq ft / 14.3 sq m
Total = 1160 sq ft / 107.6 sq m
For identification only - Not to scale



Floor plan produced in accordance with RICS Property Measurement 2nd Edition, Incorporating International Property Measurement Standards (IPMS2 Residential). © nichicom 2025. Produced for Bridges Estate Agents. REF: 1291295

Bridges
Estate Agents

Bridges

TO ARRANGE A VIEWING PLEASE CONTACT:
Tel: 01252 361550 or Email: info@bridges.co.uk



Important Notice - These particulars are set out as a general outline only for the guidance of intended purchasers/tenants and do not form part of any offer or contract and must not be relied upon as statements or representations of fact. Purchasers/Tenants must satisfy themselves by inspection or otherwise as to their correctness.